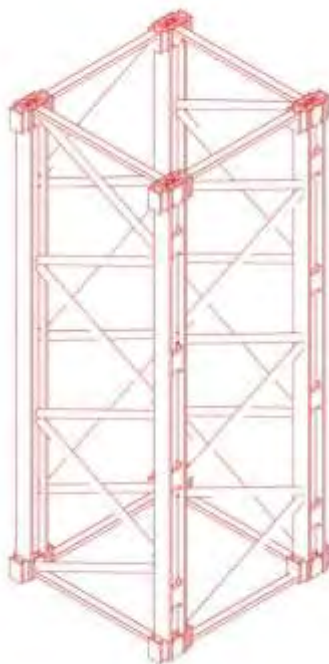


Foundation loads
TLS 65B10T
WZ C25
S23- Type ZRR section

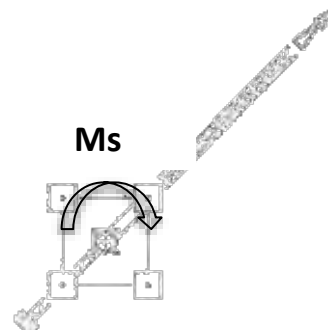
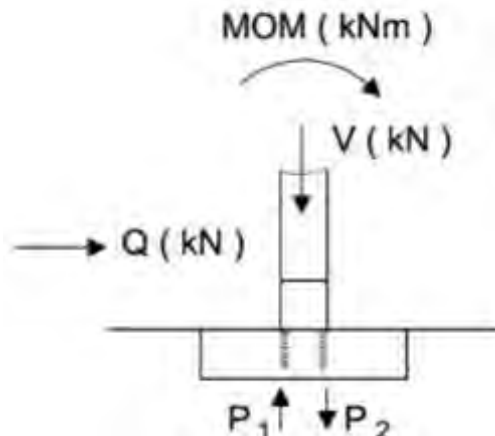


There are the following load case:

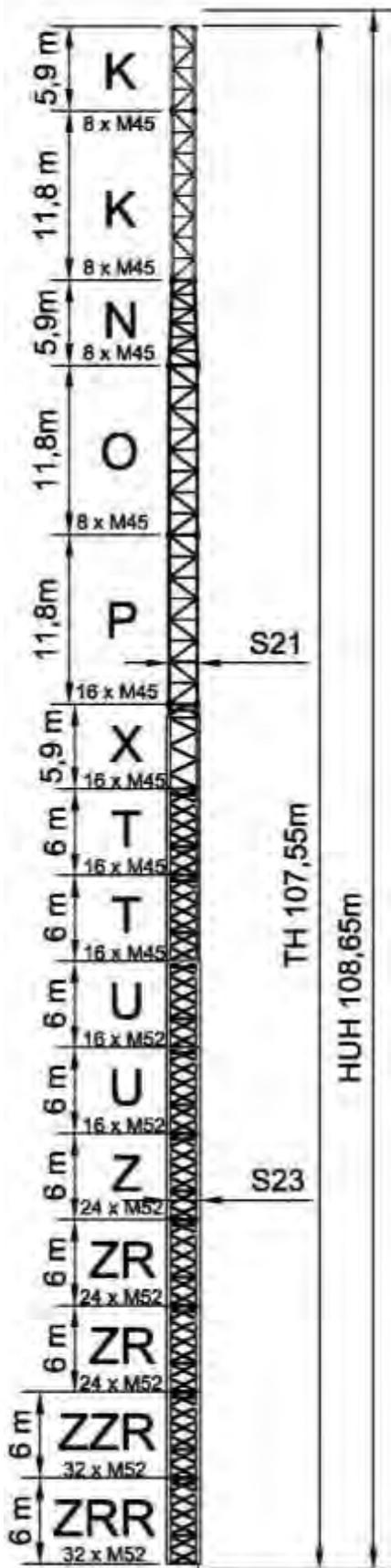
- LC1: In service, with no load and wind from the queue.
- LC2: In service with rear wind 72 Km/h
- LC3: Out of service zone C25, wind from the queue
- LC7: Out of service, frontal wind

Where:

- V: Axial load (kN)
- Q: Horizontal load (kN)
- M: Moment (kN·m)
- P₁: Max tensile effort (kN).
- P₂: Max compressive effort (kN).
- Ms: Turning moment in service= 396 KN/mt



Jib position 45 °



CRANE IN SERVICE LC 1

BOOM [m]	V [kN]	Q [kN]	MOM [kNm]	P1 [kN]	P2 [kN]
30.0	1377.6	4.5	2415.	488	-1177
35.0	1421.9	4.5	2429.	482	-1193
40.0	1441.8	4.5	2893.	637	-1358
45.0	1463.2	4.5	2606.	533	-1264
50.0	1481.3	4.5	2522.	499	-1240
55.0	1498.5	4.5	2495.	486	-1235
60.0	1502.2	4.5	2618.	527	-1278
65.0	1504.8	4.5	2593.	518	-1270

CRANE IN SERVICE LC 2

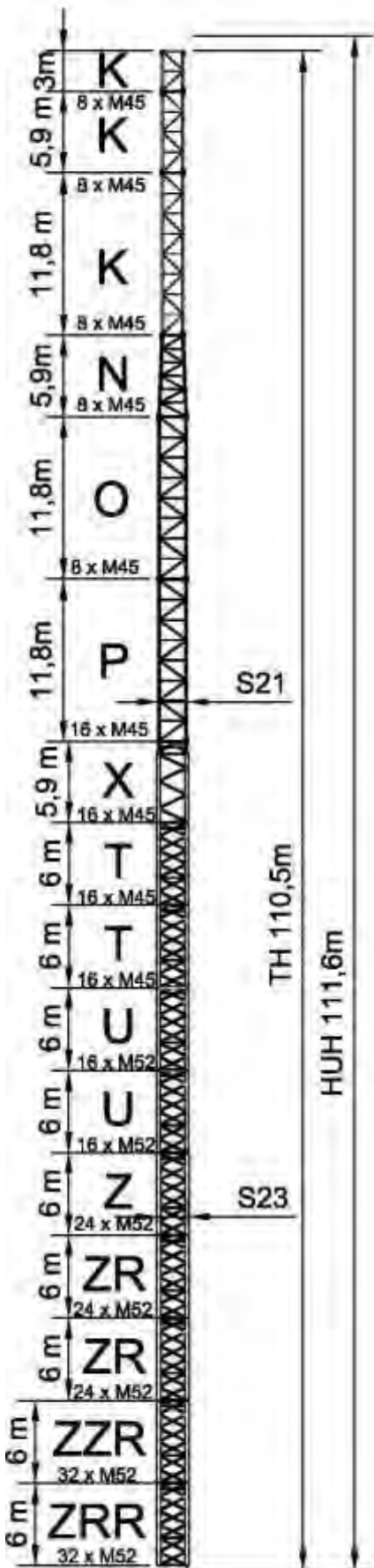
BOOM [m]	V [kN]	Q [kN]	MOM [kNm]	P1 [kN]	P2 [kN]
30.0	1377.6	69.2	6469.	1887	-2575
35.0	1421.9	69.5	6568.	1909	-2620
40.0	1441.8	69.9	7104.	2089	-2810
45.0	1463.2	70.2	6870.	2004	-2735
50.0	1481.3	70.5	6844.	1990	-2731
55.0	1498.5	70.7	6869.	1994	-2743
60.0	1502.2	70.9	7023.	2046	-2798
65.0	1504.8	71.2	7035.	2050	-2802

REAR-STORM LC 3

BOOM [m]	V [kN]	Q [kN]	MOM [kNm]	P1 [kN]	P2 [kN]
30.0	1201.1	296.3	18247.	5993	-6594
35.0	1243.3	298.3	18661.	6125	-6747
40.0	1262.3	300.6	19135.	6284	-6915
45.0	1282.7	302.0	19452.	6388	-7030
50.0	1299.9	303.8	19833.	6516	-7165
55.0	1316.3	305.2	20153.	6622	-7280
60.0	1319.8	306.3	20596.	6774	-7434
65.0	1322.3	307.8	21023.	6920	-7582

FRONT-STORM LC 7

BOOM [m]	V [kN]	Q [kN]	MOM [kNm]	P1 [kN]	P2 [kN]
30.0	1321.2	184.1	12903.	4120	-4780
35.0	1367.6	185.1	13156.	4195	-4879
40.0	1388.5	186.3	13246.	4221	-4916
45.0	1411.0	187.0	13349.	4251	-4957
50.0	1429.9	187.9	13421.	4271	-4986
55.0	1447.9	188.6	13500.	4294	-5018
60.0	1451.8	189.1	13274.	4215	-4941
65.0	1454.5	189.9	13122.	4162	-4889



CRANE IN SERVICE LC 1

BOOM [m]	V [kN]	Q [kN]	MOM [kNm]	P1 [kN]	P2 [kN]
30.0	1392.3	4.5	2497.	513	-1209
35.0	1436.6	4.5	2517.	509	-1227
40.0	1456.5	4.5	3000.	670	-1398
45.0	1477.9	4.5	2707.	564	-1303
50.0	1496.0	4.5	2622.	530	-1278
55.0	1513.2	4.5	2597.	517	-1273
60.0	1516.9	4.5	2725.	560	-1319
65.0	1519.5	4.5	2699.	551	-1310

CRANE IN SERVICE LC 2

BOOM [m]	V [kN]	Q [kN]	MOM [kNm]	P1 [kN]	P2 [kN]
30.0	1392.3	70.3	6763.	1984	-2680
35.0	1436.6	70.6	6876.	2012	-2731
40.0	1456.5	71.0	7437.	2200	-2929
45.0	1477.9	71.3	7201.	2114	-2853
50.0	1496.0	71.6	7180.	2102	-2850
55.0	1513.2	71.8	7210.	2108	-2865
60.0	1516.9	72.0	7372.	2163	-2921
65.0	1519.5	72.3	7385.	2167	-2927

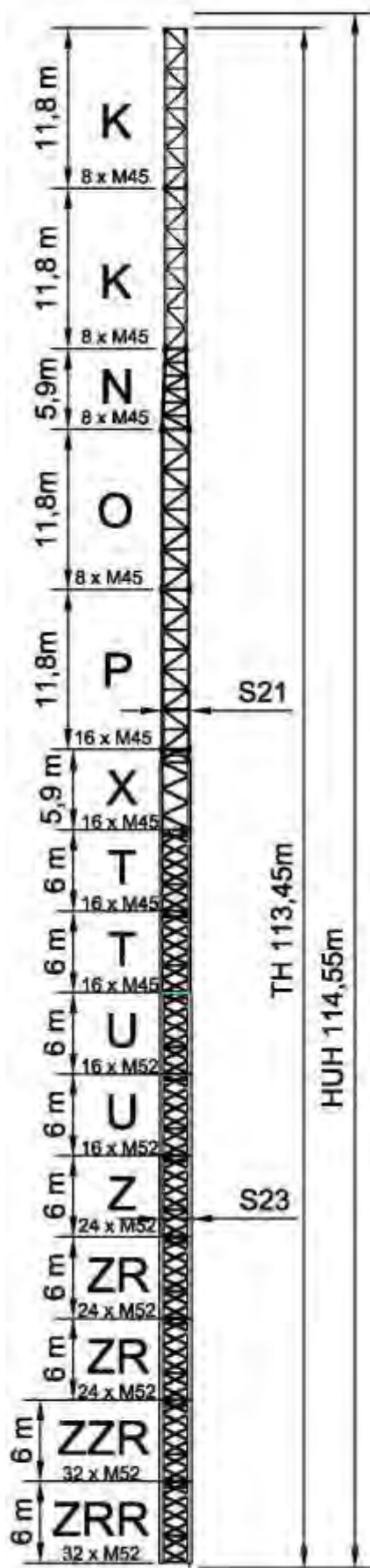
REAR-STORM LC 3

BOOM [m]	V [kN]	Q [kN]	MOM [kNm]	P1 [kN]	P2 [kN]
30.0	1215.1	302.9	19314.	6358	-6965
35.0	1257.3	304.9	19763.	6502	-7131
40.0	1276.3	307.2	20265.	6670	-7309
45.0	1296.7	308.6	20604.	6782	-7431
50.0	1313.9	310.4	21010.	6918	-7575
55.0	1330.3	311.8	21351.	7032	-7697
60.0	1333.8	313.0	21813.	7190	-7857
65.0	1336.3	314.4	22258.	7343	-8011

FRONT-STORM LC 7

BOOM [m]	V [kN]	Q [kN]	MOM [kNm]	P1 [kN]	P2 [kN]
30.0	1336.6	187.3	13513.	4327	-4995
35.0	1383.0	188.3	13793.	4411	-5103
40.0	1403.9	189.5	13897.	4442	-5144
45.0	1426.4	190.2	14013.	4476	-5189
50.0	1445.3	191.1	14096.	4500	-5223
55.0	1463.3	191.8	14186.	4527	-5259
60.0	1467.2	192.4	13955.	4446	-5180
65.0	1469.9	193.1	13800.	4392	-5127

Max Tower Configuration
for **J50** or shorter length.



CRANE IN SERVICE LC 1

BOOM [m]	V [kN]	Q [kN]	MOM [kNm]	P1 [kN]	P2 [kN]
30.0	1407.0	4.5	2588.	541	-1244
35.0	1451.3	4.5	2616.	539	-1264
40.0	1471.2	4.5	3120.	708	-1443
45.0	1492.6	4.5	2818.	598	-1345
50.0	1510.7	4.5	2733.	565	-1320

CRANE IN SERVICE LC 2

BOOM [m]	V [kN]	Q [kN]	MOM [kNm]	P1 [kN]	P2 [kN]
30.0	1407.0	71.4	7079.	2090	-2793
35.0	1451.3	71.8	7209.	2123	-2849
40.0	1471.2	72.2	7797.	2321	-3057
45.0	1492.6	72.4	7560.	2234	-2980
50.0	1510.7	72.7	7543.	2224	-2979

REAR-STORM LC 3

BOOM [m]	V [kN]	Q [kN]	MOM [kNm]	P1 [kN]	P2 [kN]
30.0	1229.1	309.5	20439.	6742	-7357
35.0	1271.3	311.5	20928.	6900	-7536
40.0	1290.3	313.8	21460.	7079	-7724
45.0	1310.7	315.3	21825.	7200	-7855
50.0	1327.9	317.0	22258.	7345	-8009

FRONT-STORM LC 7

BOOM [m]	V [kN]	Q [kN]	MOM [kNm]	P1 [kN]	P2 [kN]
30.0	1352.0	190.6	14160.	4546	-5222
35.0	1398.4	191.6	14470.	4641	-5340
40.0	1419.3	192.7	14588.	4677	-5386
45.0	1441.8	193.4	14720.	4716	-5437
50.0	1460.7	194.3	14817.	4745	-5475