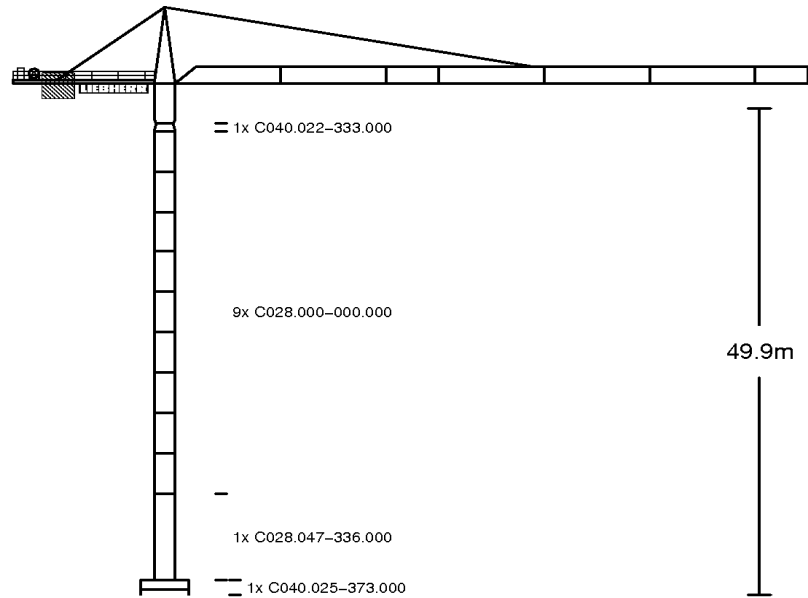


200 EC-H 10 Litronic, Turmsystem 290HC, Fundamentkreuz 200EC-H 4.6m stat.

LIEBHERR-WERK BIBERACH

09.12.2011 14:58:21
prsV1.43tpV3.08
00193013 rum0



ohne Klettereinrichtung

Kran stationär

Folgende Hubwerke wurden in der Berechnung berücksichtigt:

WIW240VZ404, WIW250MZ402, WIW250VZ402, WIW260MZ401, WIW260VZ403, WIW280MZ405

Katzstellung außer Betrieb:

| Ausleger | Ausladung | Ausleger | Ausladung |
|----------|-----------|----------|-----------|
| 60,00m | 2,30m | 55,00m | 2,30m |
| 50,00m | 2,30m | 45,00m | 2,30m |
| 40,00m | 2,30m | 35,00m | 2,30m |
| 30,00m | 2,30m | 25,00m | 2,30m |

Bauteilkompatibilitätsliste

| | |
|---|---|
| C040.022-333.000 | KUD-Auflage 200EC-H/290 0.8m C040.022-333.000 l=0,80 m |
| C028.000-000.000 insgesamt max. 37,3m | Ersatz-Turmstueck 290HC Standard 4.14m C028.047-331.000 l=12,42 m C028.047-332.000 l=4,14 m C028.092-332.000 l=4,14 m C028.086-331.000 l=12,42 m |
| C028.047-336.000 | Grundturmstueck 290HC Standard 8.85m C028.047-336.000 l=8,85 m |
| C040.025-373.000 | Fundamentkreuz 200EC-H 4.6m stat. C040.025-311.000 |

200 EC-H 10 Litronic, Turmsystem 290HC, Fundamentkreuz 200EC-H 4.6m stat.

Kran stationär, ohne Klettereinrichtung



Warnung!

Diese statischen Daten dürfen nur unter Beachtung der „Allgemeinen Sicherheitshinweise für Eckkrafttabellen“ und der Betriebsanleitung des Kranes verwendet werden.

| Krantyp: 200 EC-H 10 Litronic | | | | | | | | | | Ausleger: 60,00m | | |
|--|---------------|---------------------|---------------------------------------|------------------|------------------------------|-----|---------------|------------------------------------|------------------|-------------------------|-----|---------------|
| Turmsystem: 290HC | | | | | Turmstücklänge: 4,14m | | | | | | | |
| Grundturmstück: Grundturmstueck 290HC Standard 8.85m | | | | | | | | | | | | |
| Kranbasis: Fundamentkreuz 200EC-H 4.6m stat. | | | | | Spur: 4,6m Radstand: 4,6m | | | | | | | |
| Zahl d. Turm-Stücke | Hakenhöhe [m] | Zentralballast [to] | Eckdrücke in Betrieb [kN], MD=311 kNm | | | | | Eckdrücke außer Betrieb [kN], MD=0 | | | | |
| | | | Ecke | Auslegerstellung | | | H.-Kraft [kN] | Ecke | Auslegerstellung | | | H.-Kraft [kN] |
| | | | | 1 | 2 | 3 | | | 1 | 2 | 3 | |
| 0 | 12,65 | 40,000 | A | 281 | 453 | 109 | 37 | A | 255 | 206 | 303 | 57 |
| | | | B | 525 | 453 | 453 | | B | 188 | 206 | 206 | |
| | | | C | 281 | 109 | 453 | | C | 255 | 303 | 206 | |
| | | | D | 37 | 109 | 109 | | D | 322 | 303 | 303 | |
| 1 | 16,79 | 40,000 | A | 285 | 467 | 104 | 39 | A | 259 | 232 | 286 | 64 |
| | | | B | 543 | 467 | 467 | | B | 224 | 232 | 232 | |
| | | | C | 285 | 104 | 467 | | C | 259 | 286 | 232 | |
| | | | D | 28 | 104 | 104 | | D | 295 | 286 | 286 | |
| 2 | 20,93 | 40,000 | A | 290 | 481 | 98 | 41 | A | 263 | 270 | 256 | 73 |
| | | | B | 562 | 481 | 481 | | B | 278 | 270 | 270 | |
| | | | C | 290 | 98 | 481 | | C | 263 | 256 | 270 | |
| | | | D | 18 | 98 | 98 | | D | 249 | 256 | 256 | |
| 3 | 25,07 | 40,000 | A | 294 | 496 | 92 | 42 | A | 268 | 305 | 231 | 80 |
| | | | B | 582 | 496 | 496 | | B | 327 | 305 | 305 | |
| | | | C | 294 | 92 | 496 | | C | 268 | 231 | 305 | |
| | | | D | 7 | 92 | 92 | | D | 208 | 231 | 231 | |
| 4 | 29,21 | 40,000 | A | 294 | 512 | 86 | 44 | A | 272 | 344 | 201 | 88 |
| | | | B | 609 | 512 | 512 | | B | 383 | 344 | 344 | |
| | | | C | 294 | 86 | 512 | | C | 272 | 201 | 344 | |
| | | | D | 0 | 86 | 86 | | D | 162 | 201 | 201 | |
| 5 | 33,35 | 40,000 | A | 285 | 529 | 78 | 45 | A | 277 | 387 | 167 | 96 |
| | | | B | 644 | 529 | 529 | | B | 445 | 387 | 387 | |
| | | | C | 285 | 78 | 529 | | C | 277 | 167 | 387 | |
| | | | D | 0 | 78 | 78 | | D | 109 | 167 | 167 | |
| 6 | 37,49 | 48,000 | A | 315 | 566 | 90 | 47 | A | 302 | 454 | 149 | 103 |
| | | | B | 682 | 566 | 566 | | B | 534 | 454 | 454 | |
| | | | C | 315 | 90 | 566 | | C | 302 | 149 | 454 | |
| | | | D | 0 | 90 | 90 | | D | 69 | 149 | 149 | |
| 7 | 41,63 | 56,000 | A | 344 | 605 | 101 | 49 | A | 326 | 526 | 127 | 111 |
| | | | B | 722 | 605 | 605 | | B | 629 | 526 | 526 | |
| | | | C | 344 | 101 | 605 | | C | 326 | 127 | 526 | |
| | | | D | 0 | 101 | 101 | | D | 23 | 127 | 127 | |
| 8 | 45,77 | 72,000 | A | 398 | 664 | 132 | 52 | A | 361 | 622 | 120 | 119 |
| | | | B | 780 | 664 | 664 | | B | 761 | 622 | 622 | |
| | | | C | 398 | 132 | 664 | | C | 361 | 120 | 622 | |
| | | | D | 16 | 132 | 132 | | D | 0 | 120 | 120 | |
| 9 | 49,91 | 80,000 | A | 423 | 704 | 142 | 53 | A | 326 | 702 | 89 | 127 |
| | | | B | 827 | 704 | 704 | | B | 930 | 702 | 702 | |
| | | | C | 423 | 142 | 704 | | C | 326 | 89 | 702 | |
| | | | D | 18 | 142 | 142 | | D | 0 | 89 | 89 | |

200 EC-H 10 Litronic, Turmsystem 290HC, Fundamentkreuz 200EC-H 4.6m stat.

Kran stationär, ohne Klettereinrichtung



Warnung! Diese statischen Daten dürfen nur unter Beachtung der „Allgemeinen Sicherheitshinweise für Eckkrafttabellen“ und der Betriebsanleitung des Kranes verwendet werden.

| Krantyp: 200 EC-H 10 Litronic | | | | | | | | | | Ausleger: 55,00m | | |
|--|----------------|----------------------|---------------------------------------|------------------|------------------------------|-----|---------------|------------------------------------|------------------|-------------------------|-----|---------------|
| Turmsystem: 290HC | | | | | Turmstücklänge: 4,14m | | | | | | | |
| Grundturmstück: Grundturmstueck 290HC Standard 8.85m | | | | | | | | | | | | |
| Kranbasis: Fundamentkreuz 200EC-H 4.6m stat. | | | | | Spur: 4,6m Radstand: 4,6m | | | | | | | |
| Zahl d. Turm-Stücke | Haken-höhe [m] | Zentral-ballast [to] | Eckdrücke in Betrieb [kN], MD=275 kNm | | | | | Eckdrücke außer Betrieb [kN], MD=0 | | | | |
| | | | Ecke | Auslegerstellung | | | H.-Kraft [kN] | Ecke | Auslegerstellung | | | H.-Kraft [kN] |
| | | | | 1 | 2 | 3 | | | 1 | 2 | 3 | |
| 0 | 12,65 | 48,000 | A | 293 | 475 | 112 | 18 | A | 267 | 217 | 318 | 57 |
| | | | B | 550 | 475 | 475 | | B | 197 | 217 | 217 | |
| | | | C | 293 | 112 | 475 | | C | 267 | 318 | 217 | |
| | | | D | 37 | 112 | 112 | | D | 338 | 318 | 318 | |
| 1 | 16,79 | 48,000 | A | 298 | 487 | 109 | 38 | A | 272 | 243 | 301 | 64 |
| | | | B | 566 | 487 | 487 | | B | 234 | 243 | 243 | |
| | | | C | 298 | 109 | 487 | | C | 272 | 301 | 243 | |
| | | | D | 30 | 109 | 109 | | D | 310 | 301 | 301 | |
| 2 | 20,93 | 48,000 | A | 302 | 493 | 112 | 20 | A | 276 | 280 | 272 | 73 |
| | | | B | 573 | 493 | 493 | | B | 286 | 280 | 280 | |
| | | | C | 302 | 112 | 493 | | C | 276 | 272 | 280 | |
| | | | D | 32 | 112 | 112 | | D | 265 | 272 | 272 | |
| 3 | 25,07 | 40,000 | A | 276 | 497 | 77 | 41 | A | 260 | 295 | 226 | 80 |
| | | | B | 597 | 497 | 497 | | B | 316 | 295 | 295 | |
| | | | C | 276 | 77 | 497 | | C | 260 | 226 | 295 | |
| | | | D | 0 | 77 | 77 | | D | 205 | 226 | 226 | |
| 4 | 29,21 | 48,000 | A | 308 | 533 | 90 | 43 | A | 285 | 354 | 216 | 88 |
| | | | B | 631 | 533 | 533 | | B | 392 | 354 | 354 | |
| | | | C | 308 | 90 | 533 | | C | 285 | 216 | 354 | |
| | | | D | 0 | 90 | 90 | | D | 178 | 216 | 216 | |
| 5 | 33,35 | 48,000 | A | 299 | 550 | 83 | 45 | A | 290 | 397 | 183 | 96 |
| | | | B | 666 | 550 | 550 | | B | 454 | 397 | 397 | |
| | | | C | 299 | 83 | 550 | | C | 290 | 183 | 397 | |
| | | | D | 0 | 83 | 83 | | D | 125 | 183 | 183 | |
| 6 | 37,49 | 48,000 | A | 289 | 567 | 75 | 46 | A | 294 | 444 | 144 | 103 |
| | | | B | 704 | 567 | 567 | | B | 523 | 444 | 444 | |
| | | | C | 289 | 75 | 567 | | C | 294 | 144 | 444 | |
| | | | D | 0 | 75 | 75 | | D | 66 | 144 | 144 | |
| 7 | 41,63 | 64,000 | A | 359 | 625 | 106 | 48 | A | 339 | 536 | 142 | 111 |
| | | | B | 744 | 625 | 625 | | B | 638 | 536 | 536 | |
| | | | C | 359 | 106 | 625 | | C | 339 | 142 | 536 | |
| | | | D | 0 | 106 | 106 | | D | 40 | 142 | 142 | |
| 8 | 45,77 | 72,000 | A | 387 | 664 | 116 | 49 | A | 350 | 611 | 115 | 119 |
| | | | B | 787 | 664 | 664 | | B | 753 | 611 | 611 | |
| | | | C | 387 | 116 | 664 | | C | 350 | 115 | 611 | |
| | | | D | 0 | 116 | 116 | | D | 0 | 115 | 115 | |
| 9 | 49,91 | 88,000 | A | 436 | 724 | 147 | 52 | A | 355 | 712 | 104 | 127 |
| | | | B | 850 | 724 | 724 | | B | 922 | 712 | 712 | |
| | | | C | 436 | 147 | 724 | | C | 355 | 104 | 712 | |
| | | | D | 21 | 147 | 147 | | D | 0 | 104 | 104 | |

200 EC-H 10 Litronic, Turmsystem 290HC, Fundamentkreuz 200EC-H 4.6m stat.

Kran stationär, ohne Klettereinrichtung



Warnung!

Diese statischen Daten dürfen nur unter Beachtung der „Allgemeinen Sicherheitshinweise für Eckkrafttabellen“ und der Betriebsanleitung des Kranes verwendet werden.

| Krantyp: 200 EC-H 10 Litronic | | | | | | | | | | Ausleger: 50,00m | | |
|--|---------------|---------------------|---------------------------------------|------------------|------------------------------|-----|---------------|------------------------------------|------------------|-------------------------|------------|---------------|
| Turmsystem: 290HC | | | | | Turmstücklänge: 4,14m | | | | | | | |
| Grundturmstück: Grundturmstueck 290HC Standard 8.85m | | | | | | | | | | | | |
| Kranbasis: Fundamentkreuz 200EC-H 4.6m stat. | | | | | Spur: 4,6m Radstand: 4,6m | | | | | | | |
| Zahl d. Turm-Stücke | Hakenhöhe [m] | Zentralballast [to] | Eckdrücke in Betrieb [kN], MD=248 kNm | | | | | Eckdrücke außer Betrieb [kN], MD=0 | | | | |
| | | | Ecke | Auslegerstellung | | | H.-Kraft [kN] | Ecke | Auslegerstellung | | | H.-Kraft [kN] |
| | | | | 1 | 2 | 3 | | | 1 | 2 | 3 | |
| 0 | 12,65 | 56,000 | A | 299 | 487 | 112 | 18 | A | 278 | 221 | 335 | 57 |
| | | | B | 565 | 487 | 487 | | B | 199 | 221 | 221 | |
| | | | C | 299 | 112 | 487 | | C | 278 | 335 | 221 | |
| | | | D | 34 | 112 | 112 | | D | 356 | 335 | 335 | |
| 1 | 16,79 | 56,000 | A | 309 | 502 | 115 | 38 | A | 282 | 247 | 318 | 64 |
| | | | B | 583 | 502 | 502 | | B | 235 | 247 | 247 | |
| | | | C | 309 | 115 | 502 | | C | 282 | 318 | 247 | |
| | | | D | 34 | 115 | 115 | | D | 329 | 318 | 318 | |
| 2 | 20,93 | 56,000 | A | 308 | 505 | 112 | 20 | A | 287 | 277 | 297 | 71 |
| | | | B | 587 | 505 | 505 | | B | 277 | 277 | 277 | |
| | | | C | 308 | 112 | 505 | | C | 287 | 297 | 277 | |
| | | | D | 29 | 112 | 112 | | D | 296 | 297 | 297 | |
| 3 | 25,07 | 56,000 | A | 331 | 532 | 103 | 42 | A | 290 | 320 | 260 | 80 |
| | | | B | 610 | 532 | 532 | | B | 340 | 320 | 320 | |
| | | | C | 331 | 103 | 532 | | C | 290 | 260 | 320 | |
| | | | D | 0 | 103 | 103 | | D | 241 | 260 | 260 | |
| 4 | 29,21 | 48,000 | A | 283 | 528 | 76 | 43 | A | 275 | 339 | 210 | 88 |
| | | | B | 644 | 528 | 528 | | B | 375 | 339 | 339 | |
| | | | C | 283 | 76 | 528 | | C | 275 | 210 | 339 | |
| | | | D | 0 | 76 | 76 | | D | 174 | 210 | 210 | |
| 5 | 33,35 | 48,000 | A | 274 | 545 | 69 | 45 | A | 279 | 382 | 176 | 96 |
| | | | B | 680 | 545 | 545 | | B | 438 | 382 | 382 | |
| | | | C | 274 | 69 | 545 | | C | 279 | 176 | 382 | |
| | | | D | 0 | 69 | 69 | | D | 121 | 176 | 176 | |
| 6 | 37,49 | 56,000 | A | 304 | 583 | 80 | 46 | A | 304 | 449 | 158 | 103 |
| | | | B | 719 | 583 | 583 | | B | 526 | 449 | 449 | |
| | | | C | 304 | 80 | 583 | | C | 304 | 158 | 449 | |
| | | | D | 0 | 80 | 80 | | D | 81 | 158 | 158 | |
| 7 | 41,63 | 64,000 | A | 332 | 621 | 91 | 48 | A | 328 | 521 | 136 | 111 |
| | | | B | 759 | 621 | 621 | | B | 622 | 521 | 521 | |
| | | | C | 332 | 91 | 621 | | C | 328 | 136 | 521 | |
| | | | D | 0 | 91 | 91 | | D | 35 | 136 | 136 | |
| 8 | 45,77 | 80,000 | A | 400 | 680 | 121 | 49 | A | 373 | 617 | 129 | 119 |
| | | | B | 802 | 680 | 680 | | B | 744 | 617 | 617 | |
| | | | C | 400 | 121 | 680 | | C | 373 | 129 | 617 | |
| | | | D | 0 | 121 | 121 | | D | 2 | 129 | 129 | |
| 9 | 49,91 | 96,000 | A | 445 | 740 | 151 | 51 | A | 380 | 717 | 118 | 127 |
| | | | B | 869 | 740 | 740 | | B | 910 | 717 | 717 | |
| | | | C | 445 | 151 | 740 | | C | 380 | 118 | 717 | |
| | | | D | 22 | 151 | 151 | | D | 0 | 118 | 118 | |

200 EC-H 10 Litronic, Turmsystem 290HC, Fundamentkreuz 200EC-H 4.6m stat.

Kran stationär, ohne Klettereinrichtung



Warnung! Diese statischen Daten dürfen nur unter Beachtung der „Allgemeinen Sicherheitshinweise für Eckkrafttabellen“ und der Betriebsanleitung des Kranes verwendet werden.

| Krantyp: 200 EC-H 10 Litronic | | | | | | | | | | Ausleger: 45,00m | | |
|--|---------------|---------------------|---------------------------------------|------------------|------------------------------|-----|---------------|------------------------------------|------------------|-------------------------|-----|---------------|
| Turmsystem: 290HC | | | | | Turmstücklänge: 4,14m | | | | | | | |
| Grundturmstück: Grundturmstueck 290HC Standard 8.85m | | | | | | | | | | | | |
| Kranbasis: Fundamentkreuz 200EC-H 4.6m stat. | | | | | Spur: 4,6m Radstand: 4,6m | | | | | | | |
| Zahl d. Turm-Stücke | Hakenhöhe [m] | Zentralballast [to] | Eckdrücke in Betrieb [kN], MD=239 kNm | | | | | Eckdrücke außer Betrieb [kN], MD=0 | | | | |
| | | | Ecke | Auslegerstellung | | | H.-Kraft [kN] | Ecke | Auslegerstellung | | | H.-Kraft [kN] |
| | | | | 1 | 2 | 3 | | | 1 | 2 | 3 | |
| 0 | 12,65 | 64,000 | A | 324 | 527 | 121 | 18 | A | 298 | 239 | 356 | 57 |
| | | | B | 611 | 527 | 527 | | B | 216 | 239 | 239 | |
| | | | C | 324 | 121 | 527 | | C | 298 | 356 | 239 | |
| | | | D | 37 | 121 | 121 | | D | 379 | 356 | 356 | |
| 1 | 16,79 | 64,000 | A | 329 | 536 | 121 | 19 | A | 302 | 265 | 339 | 64 |
| | | | B | 622 | 536 | 536 | | B | 253 | 265 | 265 | |
| | | | C | 329 | 121 | 536 | | C | 302 | 339 | 265 | |
| | | | D | 35 | 121 | 121 | | D | 352 | 339 | 339 | |
| 2 | 20,93 | 64,000 | A | 333 | 546 | 121 | 20 | A | 307 | 295 | 318 | 71 |
| | | | B | 634 | 546 | 546 | | B | 295 | 295 | 295 | |
| | | | C | 333 | 121 | 546 | | C | 307 | 318 | 295 | |
| | | | D | 32 | 121 | 121 | | D | 319 | 318 | 318 | |
| 3 | 25,07 | 56,000 | A | 317 | 542 | 94 | 41 | A | 290 | 319 | 262 | 80 |
| | | | B | 637 | 542 | 542 | | B | 337 | 319 | 319 | |
| | | | C | 317 | 94 | 542 | | C | 290 | 262 | 319 | |
| | | | D | 0 | 94 | 94 | | D | 243 | 262 | 262 | |
| 4 | 29,21 | 56,000 | A | 309 | 558 | 87 | 43 | A | 295 | 358 | 232 | 88 |
| | | | B | 671 | 558 | 558 | | B | 393 | 358 | 358 | |
| | | | C | 309 | 87 | 558 | | C | 295 | 232 | 358 | |
| | | | D | 0 | 87 | 87 | | D | 196 | 232 | 232 | |
| 5 | 33,35 | 56,000 | A | 300 | 575 | 79 | 44 | A | 299 | 401 | 198 | 96 |
| | | | B | 707 | 575 | 575 | | B | 455 | 401 | 401 | |
| | | | C | 300 | 79 | 575 | | C | 299 | 198 | 401 | |
| | | | D | 0 | 79 | 79 | | D | 143 | 198 | 198 | |
| 6 | 37,49 | 56,000 | A | 290 | 592 | 71 | 46 | A | 304 | 448 | 160 | 103 |
| | | | B | 746 | 592 | 592 | | B | 524 | 448 | 448 | |
| | | | C | 290 | 71 | 592 | | C | 304 | 160 | 448 | |
| | | | D | 0 | 71 | 71 | | D | 84 | 160 | 160 | |
| 7 | 41,63 | 64,000 | A | 319 | 631 | 82 | 48 | A | 329 | 519 | 138 | 111 |
| | | | B | 787 | 631 | 631 | | B | 619 | 519 | 519 | |
| | | | C | 319 | 82 | 631 | | C | 329 | 138 | 519 | |
| | | | D | 0 | 82 | 82 | | D | 38 | 138 | 138 | |
| 8 | 45,77 | 80,000 | A | 387 | 690 | 112 | 49 | A | 373 | 615 | 131 | 119 |
| | | | B | 830 | 690 | 690 | | B | 741 | 615 | 615 | |
| | | | C | 387 | 112 | 690 | | C | 373 | 131 | 615 | |
| | | | D | 0 | 112 | 112 | | D | 5 | 131 | 131 | |
| 9 | 49,91 | 96,000 | A | 445 | 750 | 141 | 51 | A | 383 | 716 | 120 | 127 |
| | | | B | 883 | 750 | 750 | | B | 905 | 716 | 716 | |
| | | | C | 445 | 141 | 750 | | C | 383 | 120 | 716 | |
| | | | D | 8 | 141 | 141 | | D | 0 | 120 | 120 | |

200 EC-H 10 Litronic, Turmsystem 290HC, Fundamentkreuz 200EC-H 4.6m stat.

Kran stationär, ohne Klettereinrichtung



Warnung! Diese statischen Daten dürfen nur unter Beachtung der „Allgemeinen Sicherheitshinweise für Eckkrafttabellen“ und der Betriebsanleitung des Kranes verwendet werden.

| Krantyp: 200 EC-H 10 Litronic | | | | | | | | | | Ausleger: 40,00m | | |
|--|---------------|---------------------|---------------------------------------|------------------|------------------------------|-----|---------------|------------------------------------|------------------|-------------------------|-----|---------------|
| Turmsystem: 290HC | | | | | Turmstücklänge: 4,14m | | | | | | | |
| Grundturmstück: Grundturmstueck 290HC Standard 8.85m | | | | | | | | | | | | |
| Kranbasis: Fundamentkreuz 200EC-H 4.6m stat. | | | | | Spur: 4,6m Radstand: 4,6m | | | | | | | |
| Zahl d. Turm-Stücke | Hakenhöhe [m] | Zentralballast [to] | Eckdrücke in Betrieb [kN], MD=205 kNm | | | | | Eckdrücke außer Betrieb [kN], MD=0 | | | | |
| | | | Ecke | Auslegerstellung | | | H.-Kraft [kN] | Ecke | Auslegerstellung | | | H.-Kraft [kN] |
| | | | | 1 | 2 | 3 | | | 1 | 2 | 3 | |
| 0 | 12,65 | 72,000 | A | 336 | 548 | 123 | 18 | A | 309 | 239 | 380 | 57 |
| | | | B | 637 | 548 | 548 | | B | 211 | 239 | 239 | |
| | | | C | 336 | 123 | 548 | | C | 309 | 380 | 239 | |
| | | | D | 35 | 123 | 123 | | D | 408 | 380 | 380 | |
| 1 | 16,79 | 72,000 | A | 340 | 558 | 123 | 18 | A | 314 | 265 | 363 | 64 |
| | | | B | 648 | 558 | 558 | | B | 247 | 265 | 265 | |
| | | | C | 340 | 123 | 558 | | C | 314 | 363 | 265 | |
| | | | D | 33 | 123 | 123 | | D | 380 | 363 | 363 | |
| 2 | 20,93 | 72,000 | A | 345 | 567 | 123 | 19 | A | 319 | 295 | 342 | 71 |
| | | | B | 660 | 567 | 567 | | B | 290 | 295 | 295 | |
| | | | C | 345 | 123 | 567 | | C | 319 | 342 | 295 | |
| | | | D | 30 | 123 | 123 | | D | 347 | 342 | 342 | |
| 3 | 25,07 | 72,000 | A | 350 | 578 | 122 | 20 | A | 322 | 338 | 306 | 80 |
| | | | B | 673 | 578 | 578 | | B | 352 | 338 | 338 | |
| | | | C | 350 | 122 | 578 | | C | 322 | 306 | 338 | |
| | | | D | 26 | 122 | 122 | | D | 292 | 306 | 306 | |
| 4 | 29,21 | 72,000 | A | 364 | 596 | 113 | 42 | A | 327 | 377 | 276 | 88 |
| | | | B | 688 | 596 | 596 | | B | 408 | 377 | 377 | |
| | | | C | 364 | 113 | 596 | | C | 327 | 276 | 377 | |
| | | | D | 0 | 113 | 113 | | D | 245 | 276 | 276 | |
| 5 | 33,35 | 64,000 | A | 315 | 593 | 85 | 43 | A | 311 | 400 | 222 | 96 |
| | | | B | 725 | 593 | 593 | | B | 450 | 400 | 400 | |
| | | | C | 315 | 85 | 593 | | C | 311 | 222 | 400 | |
| | | | D | 0 | 85 | 85 | | D | 172 | 222 | 222 | |
| 6 | 37,49 | 64,000 | A | 305 | 610 | 76 | 45 | A | 316 | 447 | 184 | 103 |
| | | | B | 763 | 610 | 610 | | B | 519 | 447 | 447 | |
| | | | C | 305 | 76 | 610 | | C | 316 | 184 | 447 | |
| | | | D | 0 | 76 | 76 | | D | 113 | 184 | 184 | |
| 7 | 41,63 | 72,000 | A | 334 | 649 | 87 | 46 | A | 340 | 519 | 162 | 111 |
| | | | B | 804 | 649 | 649 | | B | 614 | 519 | 519 | |
| | | | C | 334 | 87 | 649 | | C | 340 | 162 | 519 | |
| | | | D | 0 | 87 | 87 | | D | 67 | 162 | 162 | |
| 8 | 45,77 | 88,000 | A | 401 | 708 | 117 | 48 | A | 385 | 615 | 155 | 119 |
| | | | B | 847 | 708 | 708 | | B | 736 | 615 | 615 | |
| | | | C | 401 | 117 | 708 | | C | 385 | 155 | 615 | |
| | | | D | 0 | 117 | 117 | | D | 34 | 155 | 155 | |
| 9 | 49,91 | 104,000 | A | 457 | 767 | 147 | 49 | A | 423 | 715 | 144 | 127 |
| | | | B | 903 | 767 | 767 | | B | 871 | 715 | 715 | |
| | | | C | 457 | 147 | 767 | | C | 423 | 144 | 715 | |
| | | | D | 11 | 147 | 147 | | D | 0 | 144 | 144 | |

200 EC-H 10 Litronic, Turmsystem 290HC, Fundamentkreuz 200EC-H 4.6m stat.

Kran stationär, ohne Klettereinrichtung



Warnung!

Diese statischen Daten dürfen nur unter Beachtung der „Allgemeinen Sicherheitshinweise für Eckkrafttabellen“ und der Betriebsanleitung des Kranes verwendet werden.

| Krantyp: 200 EC-H 10 Litronic | | | | | | | | | | Ausleger: 35,00m | | |
|--|----------------|----------------------|---------------------------------------|------------------|------------------------------|-----|---------------|------------------------------------|------------------|-------------------------|-----|---------------|
| Turmsystem: 290HC | | | | | Turmstücklänge: 4,14m | | | | | | | |
| Grundturmstück: Grundturmstueck 290HC Standard 8.85m | | | | | | | | | | | | |
| Kranbasis: Fundamentkreuz 200EC-H 4.6m stat. | | | | | Spur: 4,6m Radstand: 4,6m | | | | | | | |
| Zahl d. Turm-Stücke | Haken-höhe [m] | Zentral-ballast [to] | Eckdrücke in Betrieb [kN], MD=205 kNm | | | | | Eckdrücke außer Betrieb [kN], MD=0 | | | | |
| | | | Ecke | Auslegerstellung | | | H.-Kraft [kN] | Ecke | Auslegerstellung | | | H.-Kraft [kN] |
| | | | | 1 | 2 | 3 | | | 1 | 2 | 3 | |
| 0 | 12,65 | 64,000 | A | 311 | 512 | 110 | 34 | A | 284 | 214 | 355 | 57 |
| | | | B | 595 | 512 | 512 | | B | 187 | 214 | 214 | |
| | | | C | 311 | 110 | 512 | | C | 284 | 355 | 214 | |
| | | | D | 26 | 110 | 110 | | D | 382 | 355 | 355 | |
| 1 | 16,79 | 64,000 | A | 315 | 526 | 105 | 36 | A | 289 | 240 | 338 | 64 |
| | | | B | 614 | 526 | 526 | | B | 223 | 240 | 240 | |
| | | | C | 315 | 105 | 526 | | C | 289 | 338 | 240 | |
| | | | D | 17 | 105 | 105 | | D | 355 | 338 | 338 | |
| 2 | 20,93 | 56,000 | A | 287 | 521 | 79 | 38 | A | 274 | 250 | 297 | 71 |
| | | | B | 627 | 521 | 521 | | B | 246 | 250 | 250 | |
| | | | C | 287 | 79 | 521 | | C | 274 | 297 | 250 | |
| | | | D | 0 | 79 | 79 | | D | 302 | 297 | 297 | |
| 3 | 25,07 | 56,000 | A | 280 | 536 | 73 | 39 | A | 277 | 293 | 261 | 80 |
| | | | B | 659 | 536 | 536 | | B | 307 | 293 | 293 | |
| | | | C | 280 | 73 | 536 | | C | 277 | 261 | 293 | |
| | | | D | 0 | 73 | 73 | | D | 247 | 261 | 261 | |
| 4 | 29,21 | 56,000 | A | 272 | 552 | 66 | 41 | A | 282 | 332 | 231 | 88 |
| | | | B | 693 | 552 | 552 | | B | 363 | 332 | 332 | |
| | | | C | 272 | 66 | 552 | | C | 282 | 231 | 332 | |
| | | | D | 0 | 66 | 66 | | D | 200 | 231 | 231 | |
| 5 | 33,35 | 56,000 | A | 263 | 569 | 58 | 42 | A | 286 | 375 | 197 | 96 |
| | | | B | 729 | 569 | 569 | | B | 425 | 375 | 375 | |
| | | | C | 263 | 58 | 569 | | C | 286 | 197 | 375 | |
| | | | D | 0 | 58 | 58 | | D | 147 | 197 | 197 | |
| 6 | 37,49 | 64,000 | A | 293 | 607 | 70 | 44 | A | 311 | 443 | 179 | 103 |
| | | | B | 768 | 607 | 607 | | B | 514 | 443 | 443 | |
| | | | C | 293 | 70 | 607 | | C | 311 | 179 | 443 | |
| | | | D | 0 | 70 | 70 | | D | 107 | 179 | 179 | |
| 7 | 41,63 | 80,000 | A | 362 | 665 | 101 | 45 | A | 355 | 534 | 176 | 111 |
| | | | B | 808 | 665 | 665 | | B | 629 | 534 | 534 | |
| | | | C | 362 | 101 | 665 | | C | 355 | 176 | 534 | |
| | | | D | 0 | 101 | 101 | | D | 81 | 176 | 176 | |
| 8 | 45,77 | 88,000 | A | 389 | 704 | 111 | 47 | A | 380 | 610 | 150 | 119 |
| | | | B | 851 | 704 | 704 | | B | 731 | 610 | 610 | |
| | | | C | 389 | 111 | 704 | | C | 380 | 150 | 610 | |
| | | | D | 0 | 111 | 111 | | D | 28 | 150 | 150 | |
| 9 | 49,91 | 104,000 | A | 452 | 764 | 140 | 49 | A | 413 | 710 | 139 | 127 |
| | | | B | 900 | 764 | 764 | | B | 871 | 710 | 710 | |
| | | | C | 452 | 140 | 764 | | C | 413 | 139 | 710 | |
| | | | D | 4 | 140 | 140 | | D | 0 | 139 | 139 | |

200 EC-H 10 Litronic, Turmsystem 290HC, Fundamentkreuz 200EC-H 4.6m stat.

Kran stationär, ohne Klettereinrichtung



Warnung! Diese statischen Daten dürfen nur unter Beachtung der „Allgemeinen Sicherheitshinweise für Eckkrafttabellen“ und der Betriebsanleitung des Kranes verwendet werden.

| Krantyp: 200 EC-H 10 Litronic | | | | | | | | | | Ausleger: 30,00m | | |
|--|---------------|---------------------|---------------------------------------|------------------|------------------------------|-----|---------------|------------------------------------|------------------|-------------------------|-----|---------------|
| Turmsystem: 290HC | | | | | Turmstücklänge: 4,14m | | | | | | | |
| Grundturmstück: Grundturmstueck 290HC Standard 8.85m | | | | | | | | | | | | |
| Kranbasis: Fundamentkreuz 200EC-H 4.6m stat. | | | | | Spur: 4,6m Radstand: 4,6m | | | | | | | |
| Zahl d. Turm-Stücke | Hakenhöhe [m] | Zentralballast [to] | Eckdrücke in Betrieb [kN], MD=205 kNm | | | | | Eckdrücke außer Betrieb [kN], MD=0 | | | | |
| | | | Ecke | Auslegerstellung | | | H.-Kraft [kN] | Ecke | Auslegerstellung | | | H.-Kraft [kN] |
| | | | | 1 | 2 | 3 | | | 1 | 2 | 3 | |
| 0 | 12,65 | 64,000 | A | 303 | 503 | 103 | 33 | A | 276 | 208 | 345 | 57 |
| | | | B | 586 | 503 | 503 | | B | 182 | 208 | 208 | |
| | | | C | 303 | 103 | 503 | | C | 276 | 345 | 208 | |
| | | | D | 20 | 103 | 103 | | D | 371 | 345 | 345 | |
| 1 | 16,79 | 64,000 | A | 307 | 517 | 98 | 35 | A | 281 | 234 | 328 | 64 |
| | | | B | 604 | 517 | 517 | | B | 218 | 234 | 234 | |
| | | | C | 307 | 98 | 517 | | C | 281 | 328 | 234 | |
| | | | D | 11 | 98 | 98 | | D | 344 | 328 | 328 | |
| 2 | 20,93 | 56,000 | A | 273 | 511 | 73 | 36 | A | 266 | 245 | 287 | 71 |
| | | | B | 623 | 511 | 511 | | B | 241 | 245 | 245 | |
| | | | C | 273 | 73 | 511 | | C | 266 | 287 | 245 | |
| | | | D | 0 | 73 | 73 | | D | 291 | 287 | 287 | |
| 3 | 25,07 | 56,000 | A | 266 | 527 | 66 | 38 | A | 269 | 287 | 251 | 80 |
| | | | B | 655 | 527 | 527 | | B | 301 | 287 | 287 | |
| | | | C | 266 | 66 | 527 | | C | 269 | 251 | 287 | |
| | | | D | 0 | 66 | 66 | | D | 237 | 251 | 251 | |
| 4 | 29,21 | 56,000 | A | 258 | 543 | 59 | 39 | A | 274 | 326 | 221 | 88 |
| | | | B | 689 | 543 | 543 | | B | 357 | 326 | 326 | |
| | | | C | 258 | 59 | 543 | | C | 274 | 221 | 326 | |
| | | | D | 0 | 59 | 59 | | D | 190 | 221 | 221 | |
| 5 | 33,35 | 56,000 | A | 249 | 560 | 51 | 41 | A | 278 | 369 | 187 | 96 |
| | | | B | 726 | 560 | 560 | | B | 419 | 369 | 369 | |
| | | | C | 249 | 51 | 560 | | C | 278 | 187 | 369 | |
| | | | D | 0 | 51 | 51 | | D | 137 | 187 | 187 | |
| 6 | 37,49 | 72,000 | A | 319 | 618 | 83 | 43 | A | 323 | 456 | 189 | 103 |
| | | | B | 764 | 618 | 618 | | B | 528 | 456 | 456 | |
| | | | C | 319 | 83 | 618 | | C | 323 | 189 | 456 | |
| | | | D | 0 | 83 | 83 | | D | 117 | 189 | 189 | |
| 7 | 41,63 | 80,000 | A | 347 | 656 | 94 | 44 | A | 347 | 528 | 167 | 111 |
| | | | B | 805 | 656 | 656 | | B | 623 | 528 | 528 | |
| | | | C | 347 | 94 | 656 | | C | 347 | 167 | 528 | |
| | | | D | 0 | 94 | 94 | | D | 71 | 167 | 167 | |
| 8 | 45,77 | 96,000 | A | 415 | 715 | 124 | 46 | A | 392 | 624 | 160 | 119 |
| | | | B | 848 | 715 | 715 | | B | 745 | 624 | 624 | |
| | | | C | 415 | 124 | 715 | | C | 392 | 160 | 624 | |
| | | | D | 0 | 124 | 124 | | D | 38 | 160 | 160 | |
| 9 | 49,91 | 104,000 | A | 442 | 755 | 133 | 47 | A | 395 | 704 | 129 | 127 |
| | | | B | 893 | 755 | 755 | | B | 875 | 704 | 704 | |
| | | | C | 442 | 133 | 755 | | C | 395 | 129 | 704 | |
| | | | D | 0 | 133 | 133 | | D | 0 | 129 | 129 | |

200 EC-H 10 Litronic, Turmsystem 290HC, Fundamentkreuz 200EC-H 4.6m stat.

Kran stationär, ohne Klettereinrichtung



Warnung!

Diese statischen Daten dürfen nur unter Beachtung der „Allgemeinen Sicherheitshinweise für Eckkrafttabellen“ und der Betriebsanleitung des Kranes verwendet werden.

| Krantyp: 200 EC-H 10 Litronic | | | | | | | | | | Ausleger: 25,00m | | |
|--|----------------|----------------------|---------------------------------------|------------------|------------------------------|-----|---------------|------------------------------------|------------------|-------------------------|-----|---------------|
| Turmsystem: 290HC | | | | | Turmstücklänge: 4,14m | | | | | | | |
| Grundturmstück: Grundturmstueck 290HC Standard 8.85m | | | | | | | | | | | | |
| Kranbasis: Fundamentkreuz 200EC-H 4.6m stat. | | | | | Spur: 4,6m Radstand: 4,6m | | | | | | | |
| Zahl d. Turm-Stücke | Haken-höhe [m] | Zentral-ballast [to] | Eckdrücke in Betrieb [kN], MD=205 kNm | | | | | Eckdrücke außer Betrieb [kN], MD=0 | | | | |
| | | | Ecke | Auslegerstellung | | | H.-Kraft [kN] | Ecke | Auslegerstellung | | | H.-Kraft [kN] |
| | | | | 1 | 2 | 3 | | | 1 | 2 | 3 | |
| 0 | 12,65 | 48,000 | A | 248 | 429 | 72 | 32 | A | 224 | 180 | 268 | 57 |
| | | | B | 505 | 429 | 429 | | B | 164 | 180 | 180 | |
| | | | C | 248 | 72 | 429 | | C | 224 | 268 | 180 | |
| | | | D | 0 | 72 | 72 | | D | 284 | 268 | 268 | |
| 1 | 16,79 | 48,000 | A | 243 | 443 | 67 | 33 | A | 228 | 206 | 251 | 64 |
| | | | B | 533 | 443 | 443 | | B | 200 | 206 | 206 | |
| | | | C | 243 | 67 | 443 | | C | 228 | 251 | 206 | |
| | | | D | 0 | 67 | 67 | | D | 257 | 251 | 251 | |
| 2 | 20,93 | 48,000 | A | 238 | 457 | 62 | 35 | A | 232 | 242 | 221 | 73 |
| | | | B | 562 | 457 | 457 | | B | 252 | 242 | 242 | |
| | | | C | 238 | 62 | 457 | | C | 232 | 221 | 242 | |
| | | | D | 0 | 62 | 62 | | D | 212 | 221 | 221 | |
| 3 | 25,07 | 48,000 | A | 231 | 473 | 55 | 36 | A | 236 | 277 | 196 | 80 |
| | | | B | 594 | 473 | 473 | | B | 301 | 277 | 277 | |
| | | | C | 231 | 55 | 473 | | C | 236 | 196 | 277 | |
| | | | D | 0 | 55 | 55 | | D | 172 | 196 | 196 | |
| 4 | 29,21 | 48,000 | A | 223 | 489 | 48 | 38 | A | 241 | 316 | 166 | 88 |
| | | | B | 628 | 489 | 489 | | B | 357 | 316 | 316 | |
| | | | C | 223 | 48 | 489 | | C | 241 | 166 | 316 | |
| | | | D | 0 | 48 | 48 | | D | 125 | 166 | 166 | |
| 5 | 33,35 | 56,000 | A | 254 | 526 | 61 | 39 | A | 266 | 379 | 152 | 96 |
| | | | B | 665 | 526 | 526 | | B | 439 | 379 | 379 | |
| | | | C | 254 | 61 | 526 | | C | 266 | 152 | 379 | |
| | | | D | 0 | 61 | 61 | | D | 92 | 152 | 152 | |
| 6 | 37,49 | 64,000 | A | 284 | 563 | 72 | 41 | A | 290 | 447 | 134 | 103 |
| | | | B | 703 | 563 | 563 | | B | 528 | 447 | 447 | |
| | | | C | 284 | 72 | 563 | | C | 290 | 134 | 447 | |
| | | | D | 0 | 72 | 72 | | D | 52 | 134 | 134 | |
| 7 | 41,63 | 72,000 | A | 313 | 602 | 83 | 43 | A | 315 | 518 | 111 | 111 |
| | | | B | 744 | 602 | 602 | | B | 623 | 518 | 518 | |
| | | | C | 313 | 83 | 602 | | C | 315 | 111 | 518 | |
| | | | D | 0 | 83 | 83 | | D | 6 | 111 | 111 | |
| 8 | 45,77 | 88,000 | A | 381 | 661 | 113 | 44 | A | 333 | 614 | 105 | 119 |
| | | | B | 786 | 661 | 661 | | B | 772 | 614 | 614 | |
| | | | C | 381 | 113 | 661 | | C | 333 | 105 | 614 | |
| | | | D | 0 | 113 | 113 | | D | 0 | 105 | 105 | |
| 9 | 49,91 | 104,000 | A | 432 | 720 | 143 | 46 | A | 338 | 714 | 94 | 127 |
| | | | B | 847 | 720 | 720 | | B | 940 | 714 | 714 | |
| | | | C | 432 | 143 | 720 | | C | 338 | 94 | 714 | |
| | | | D | 16 | 143 | 143 | | D | 0 | 94 | 94 | |