
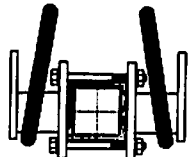
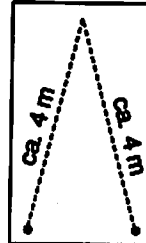


Montage: Ausleger und Anschlagpunkte



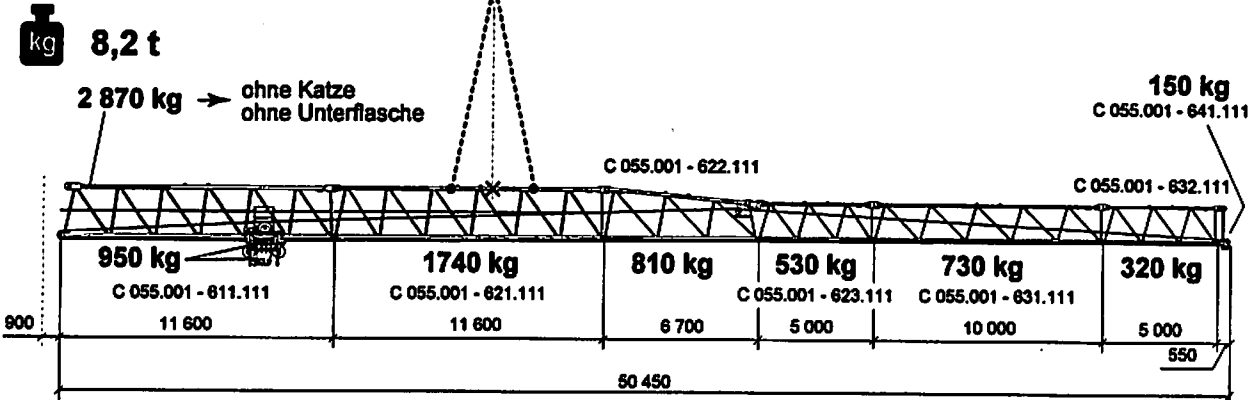
 Schwerpunkte durch Verschieben der Halterungen ermitteln und rot markieren!

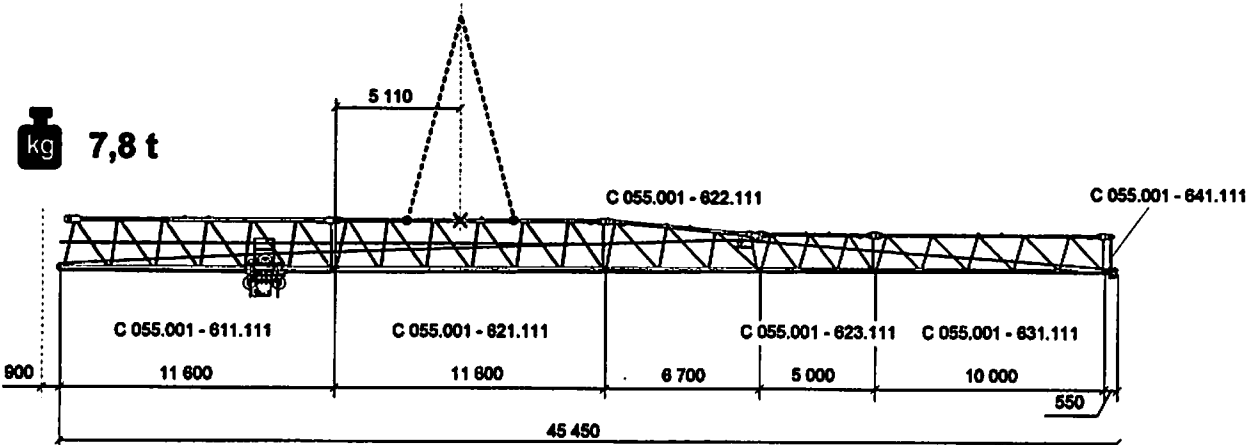
x - Schwerpunkt

Maßangaben in mm

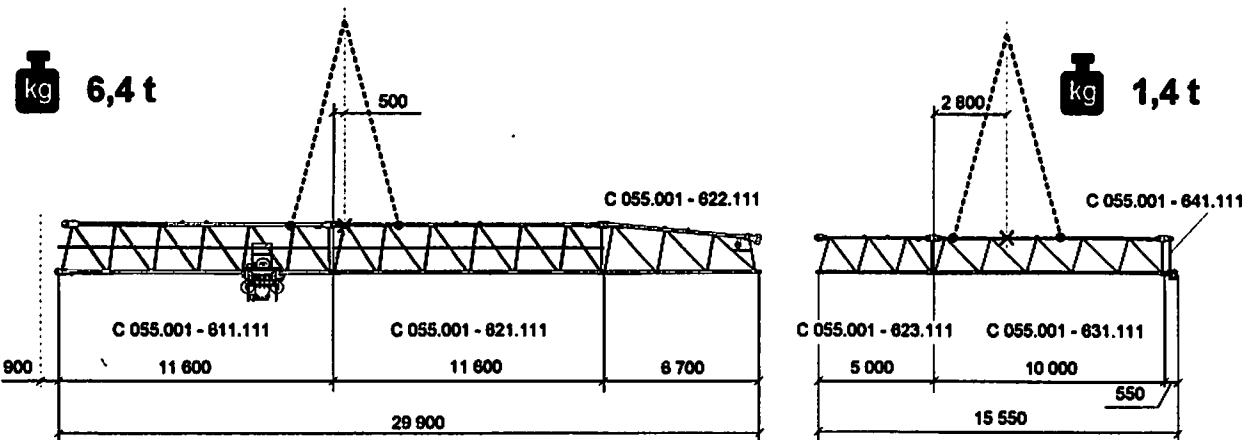
50 m Ausladung





45 m Ausladung



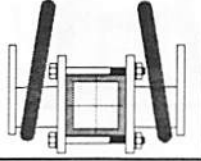
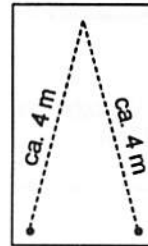
getrennte Montage 45 m Ausladung



Montage: Ausleger und Anschlagpunkte

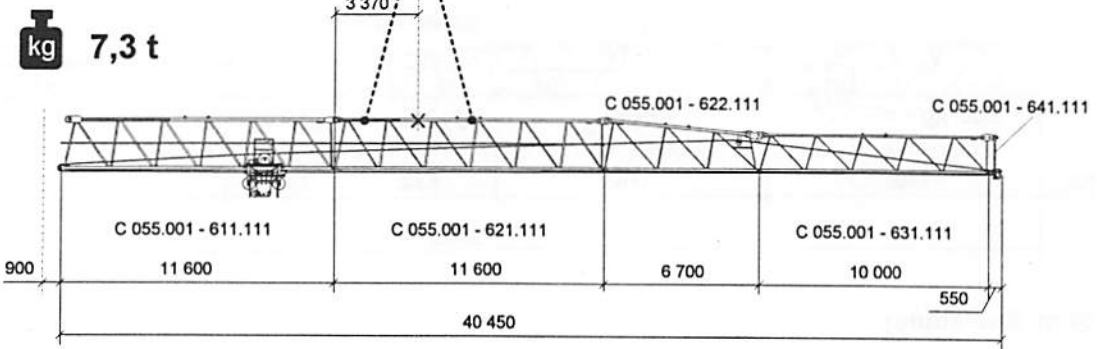
 Schwerpunkte durch Verschieben
 der Halterungen ermitteln
 und rot markieren!

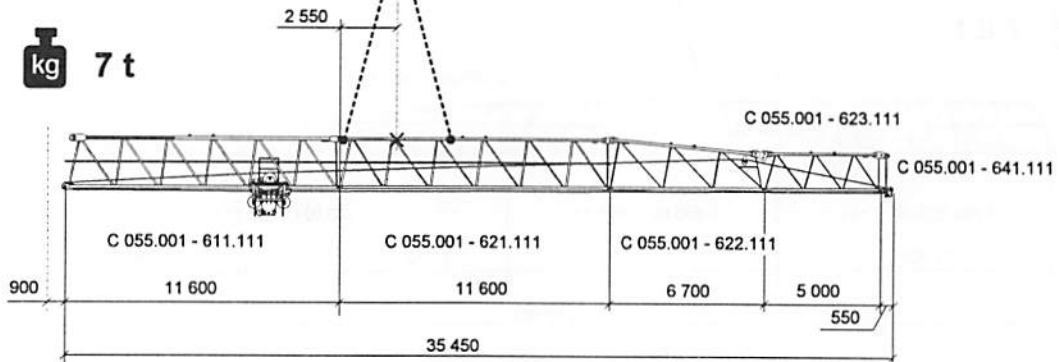
× - Schwerpunkt

Maßangaben in mm

40 m Ausladung



35 m Ausladung



30 m Ausladung

