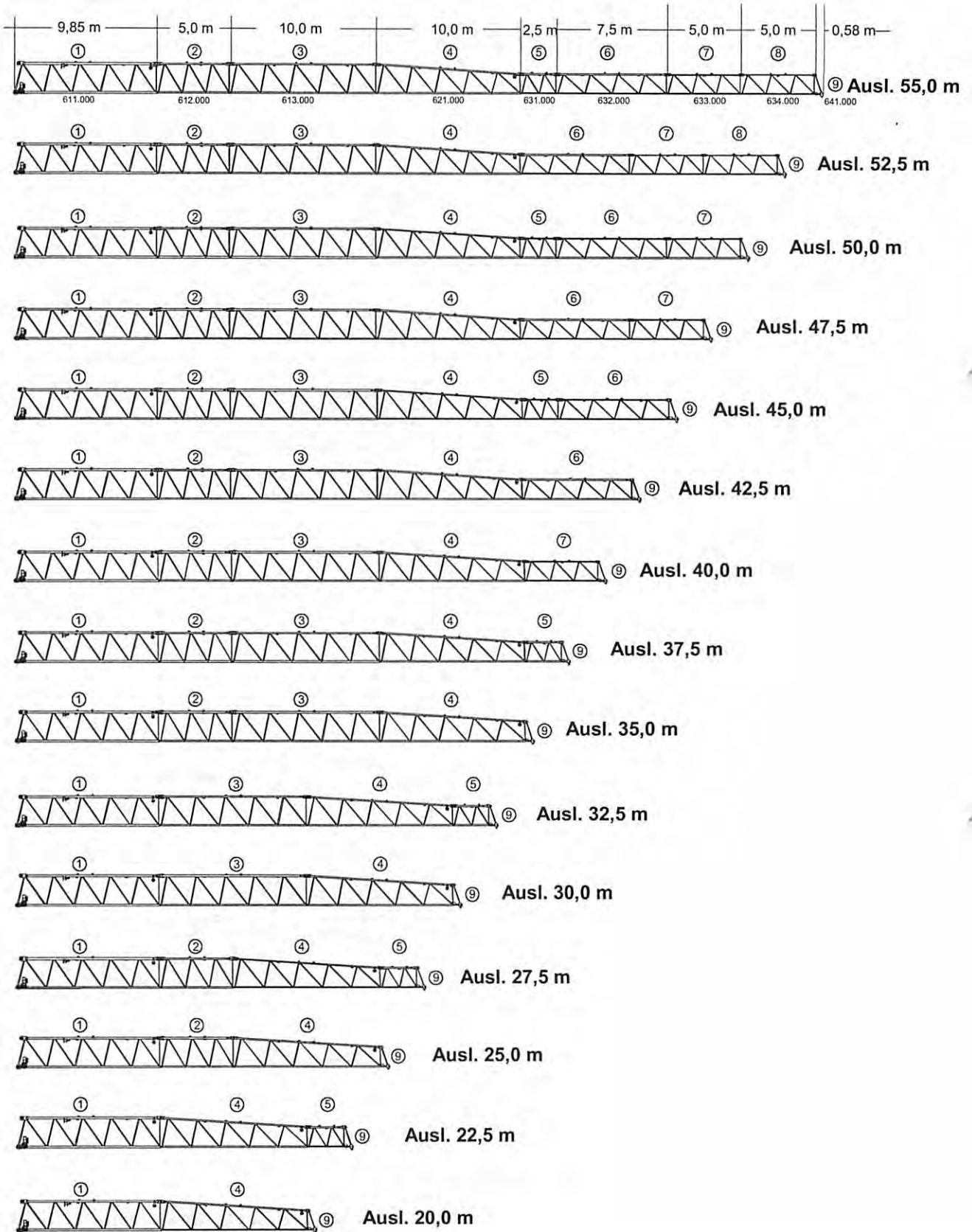


Vormontage des Auslegers

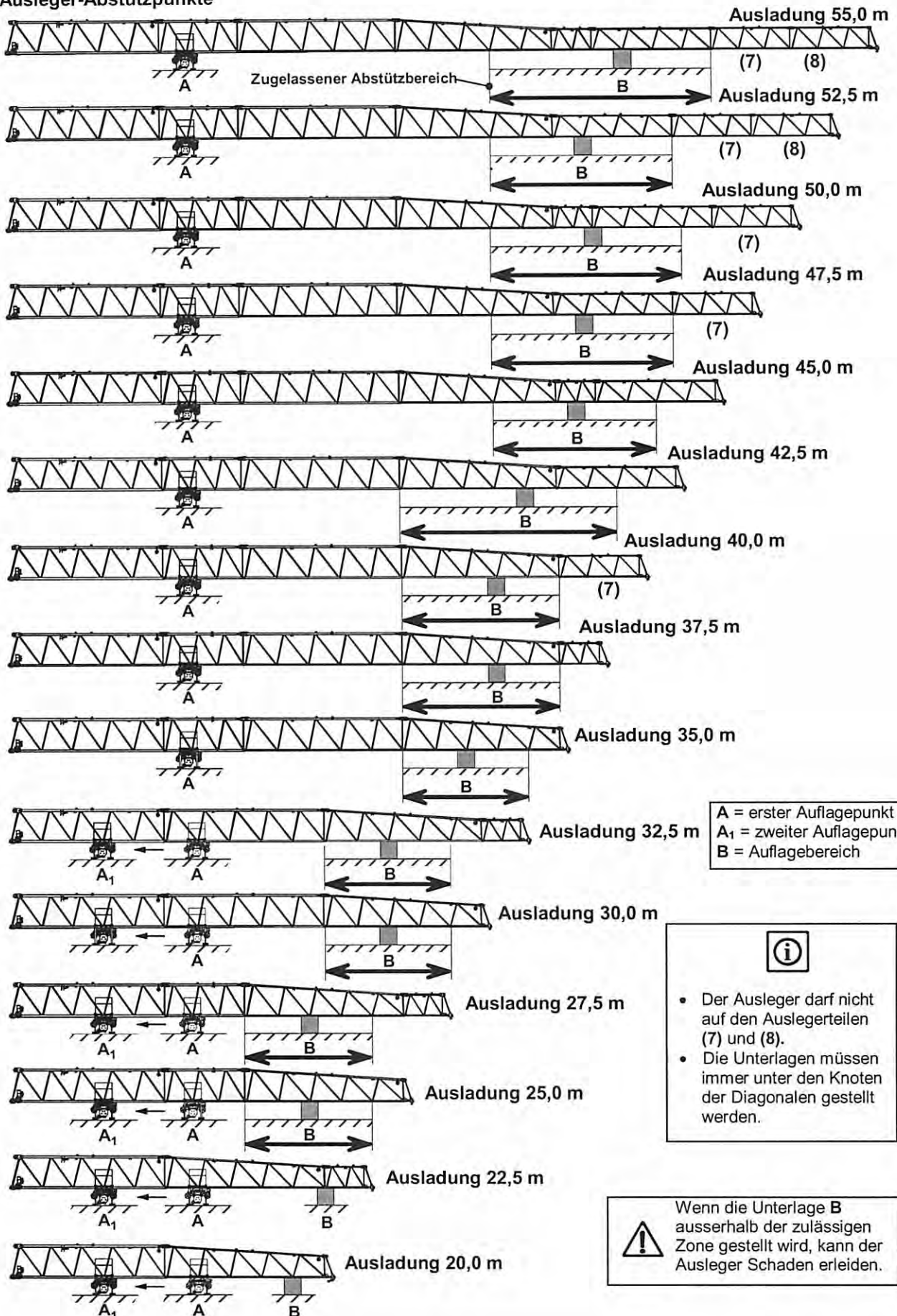
110EC-B 6 FR.tronic®

Zusammenstellung des Auslegers



Vormontage des Auslegers

Ausleger-Abstützpunkte

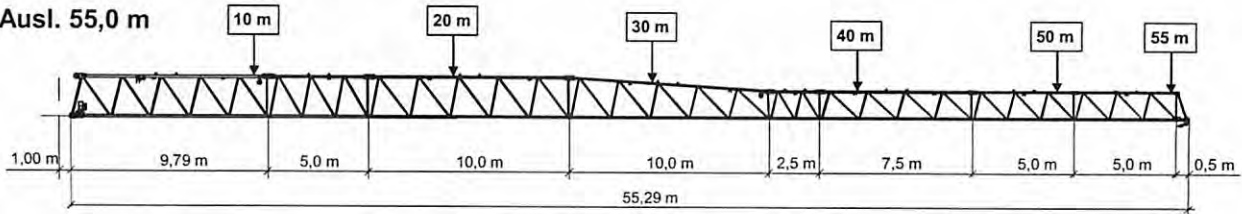


**Vormontage des Auslegers**

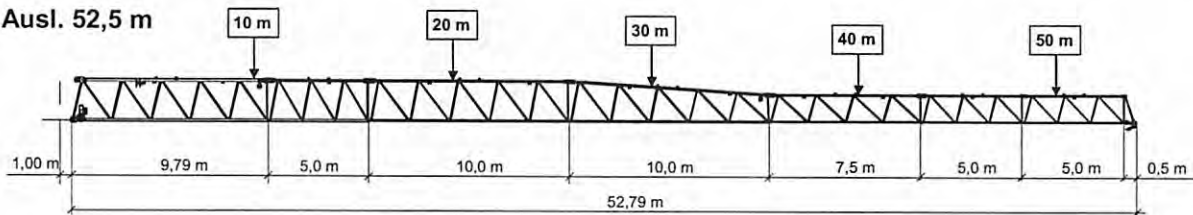
110EC-B 6 FR.tronic®

**Anordnung Ausladungsschilder**

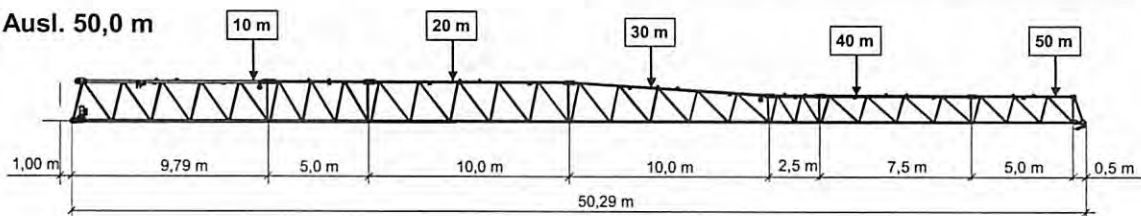
**Ausl. 55,0 m**



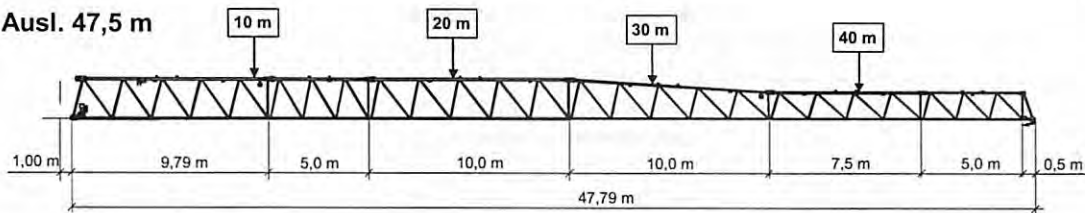
**Ausl. 52,5 m**



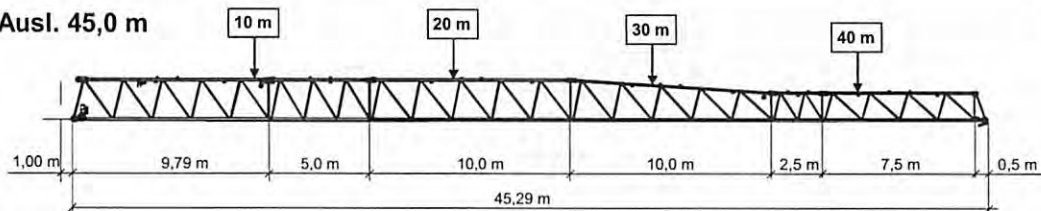
**Ausl. 50,0 m**



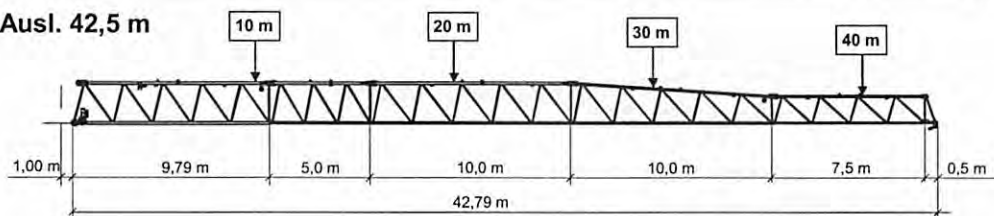
**Ausl. 47,5 m**



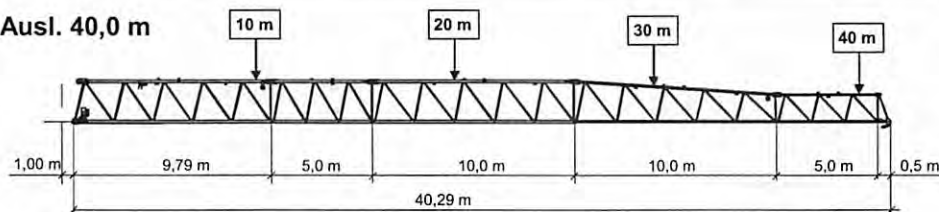
**Ausl. 45,0 m**



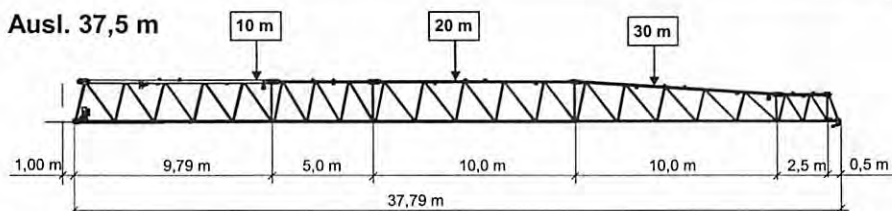
**Ausl. 42,5 m**



**Ausl. 40,0 m**

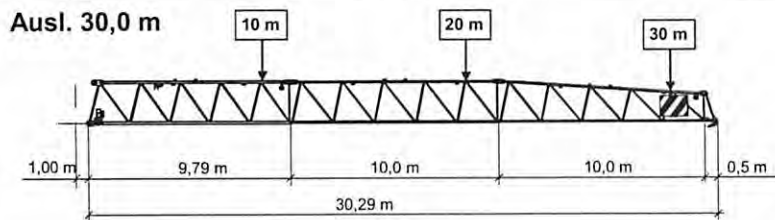
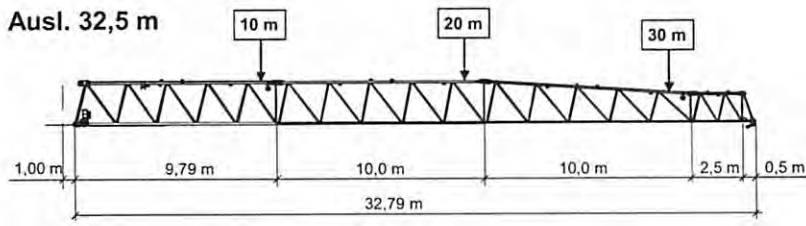
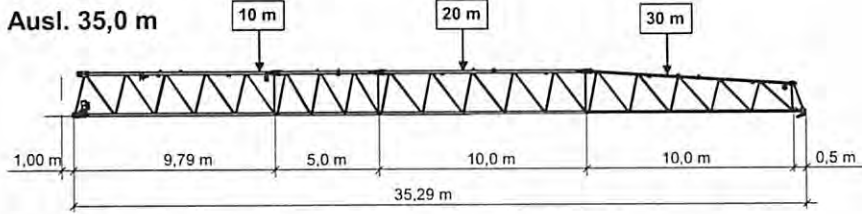


**Ausl. 37,5 m**

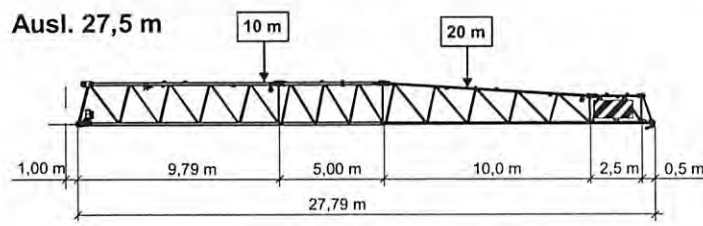


Vormontage des Auslegers

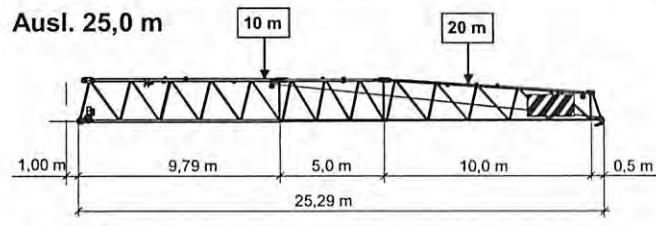
110EC-B 6 FR.tronic®



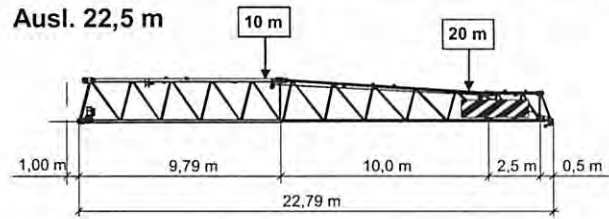
  
 0,6 m<sup>2</sup> Fahne aus  
 leichtem Material bei  
 28,8 m Ausladung



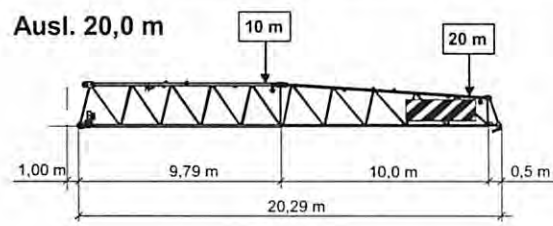
  
 1,8 m<sup>2</sup> Fahne aus  
 leichtem Material bei  
 25,8 m Ausladung



  
 3,0 m<sup>2</sup> Fahne aus  
 leichtem Material bei  
 22,8 m Ausladung



  
 4,2 m<sup>2</sup> Fahne aus  
 leichtem Material bei  
 19,8 m Ausladung



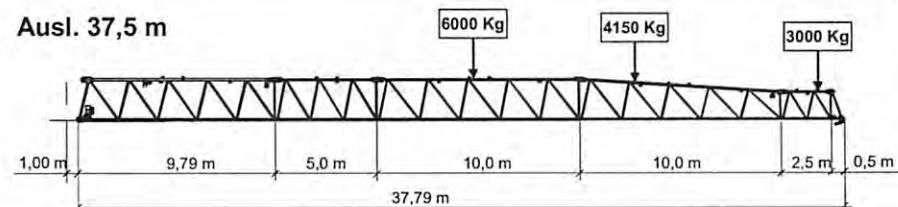
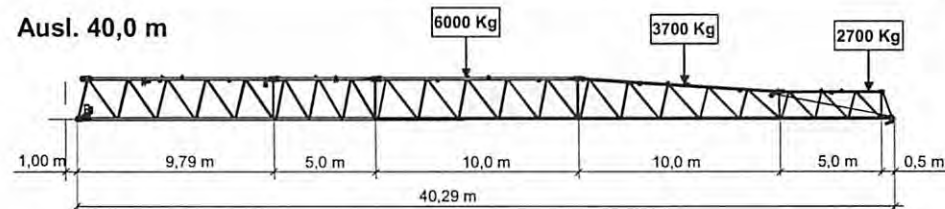
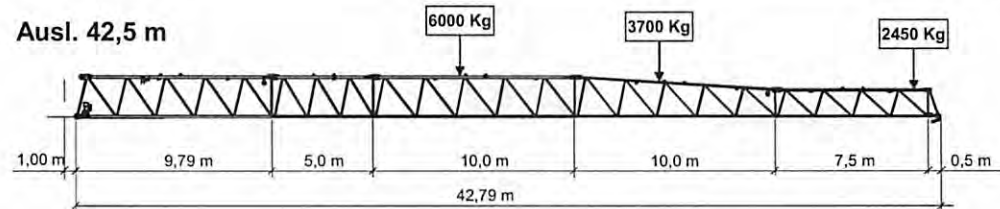
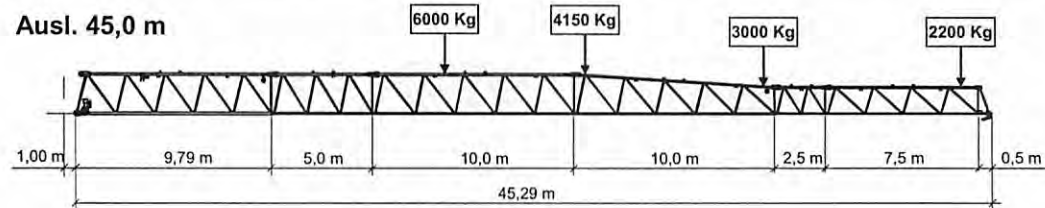
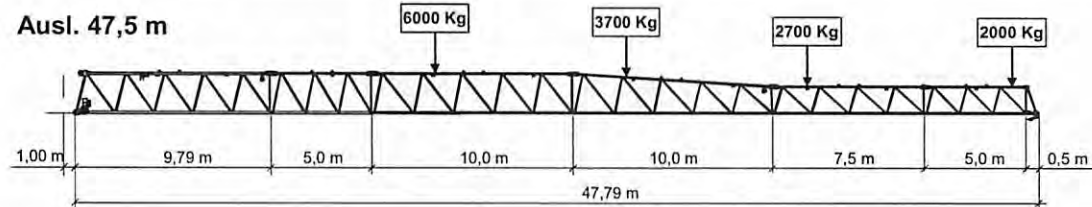
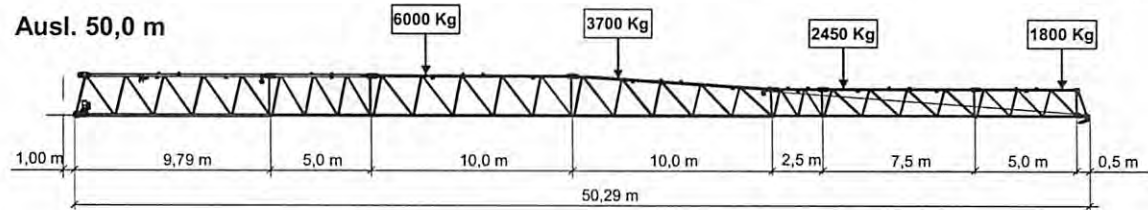
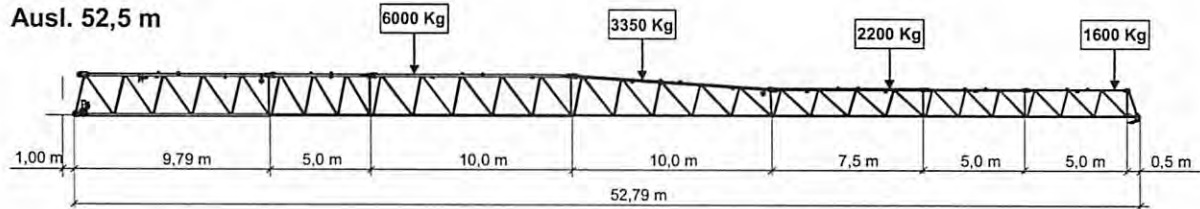
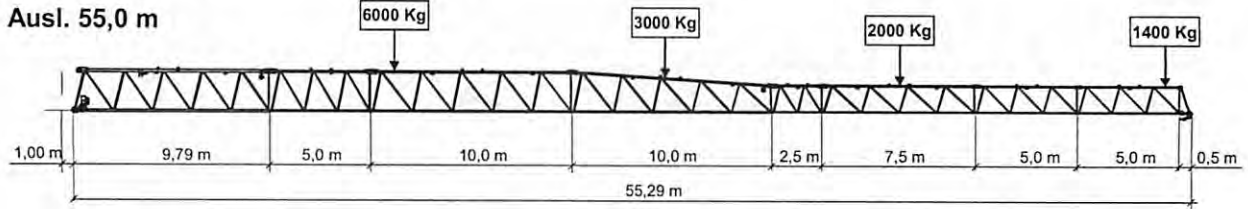
  
 5,4 m<sup>2</sup> Fahne aus  
 leichtem Material bei  
 16,8 m Ausladung



**Vormontage des Auslegers**

110EC-B 6 FR.tronic®

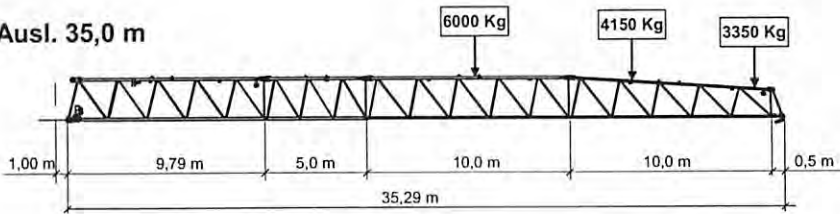
**Anordnung Traglastschilder 2-Strang**



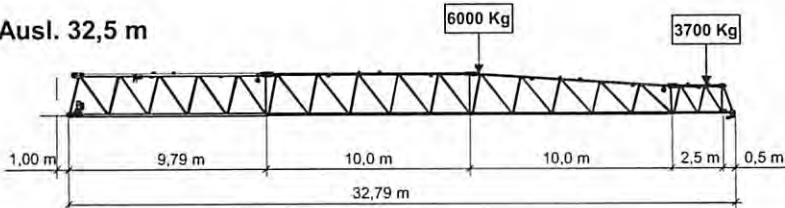
Vormontage des Auslegers

110EC-B 6 FR.tronic®

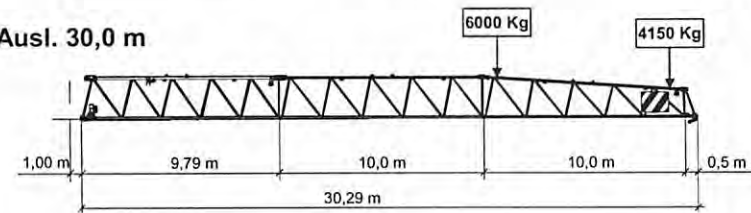
Ausl. 35,0 m



Ausl. 32,5 m

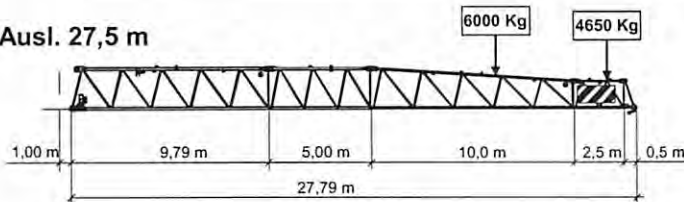


Ausl. 30,0 m



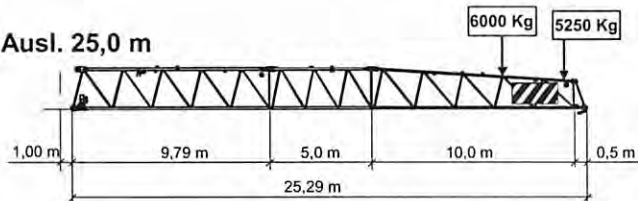
 0,6 m<sup>2</sup> Fahne aus leichtem Material bei 28,8 m Ausladung

Ausl. 27,5 m



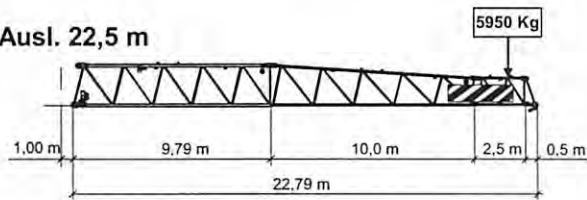
 1,8 m<sup>2</sup> Fahne aus leichtem Material bei 25,8 m Ausladung

Ausl. 25,0 m



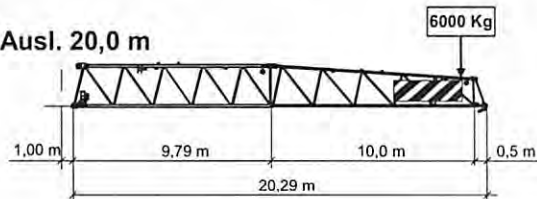
 3,0 m<sup>2</sup> Fahne aus leichtem Material bei 22,8 m Ausladung

Ausl. 22,5 m



 4,2 m<sup>2</sup> Fahne aus leichtem Material bei 19,8 m Ausladung

Ausl. 20,0 m



 5,4 m<sup>2</sup> Fahne aus leichtem Material bei 16,8 m Ausladung