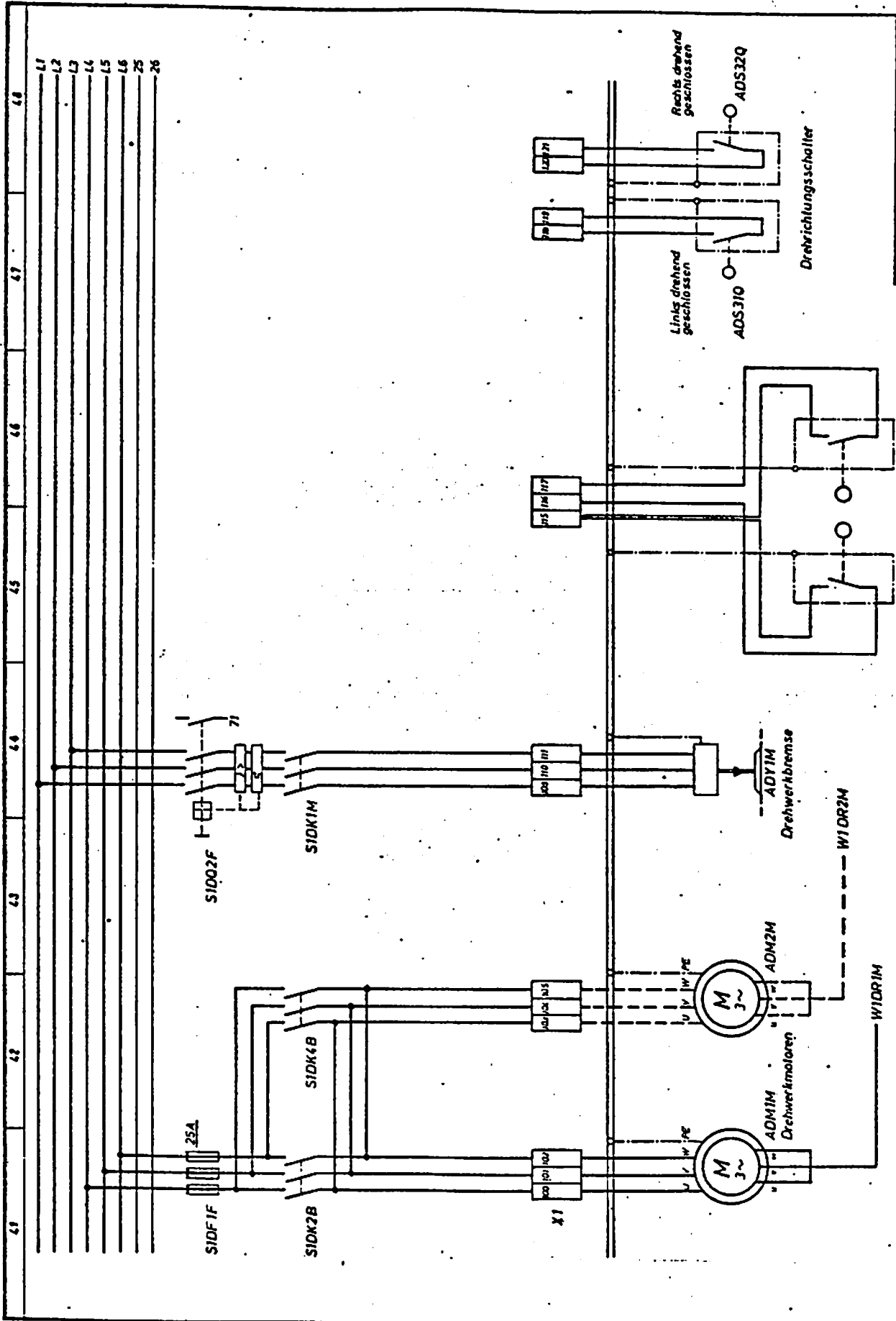
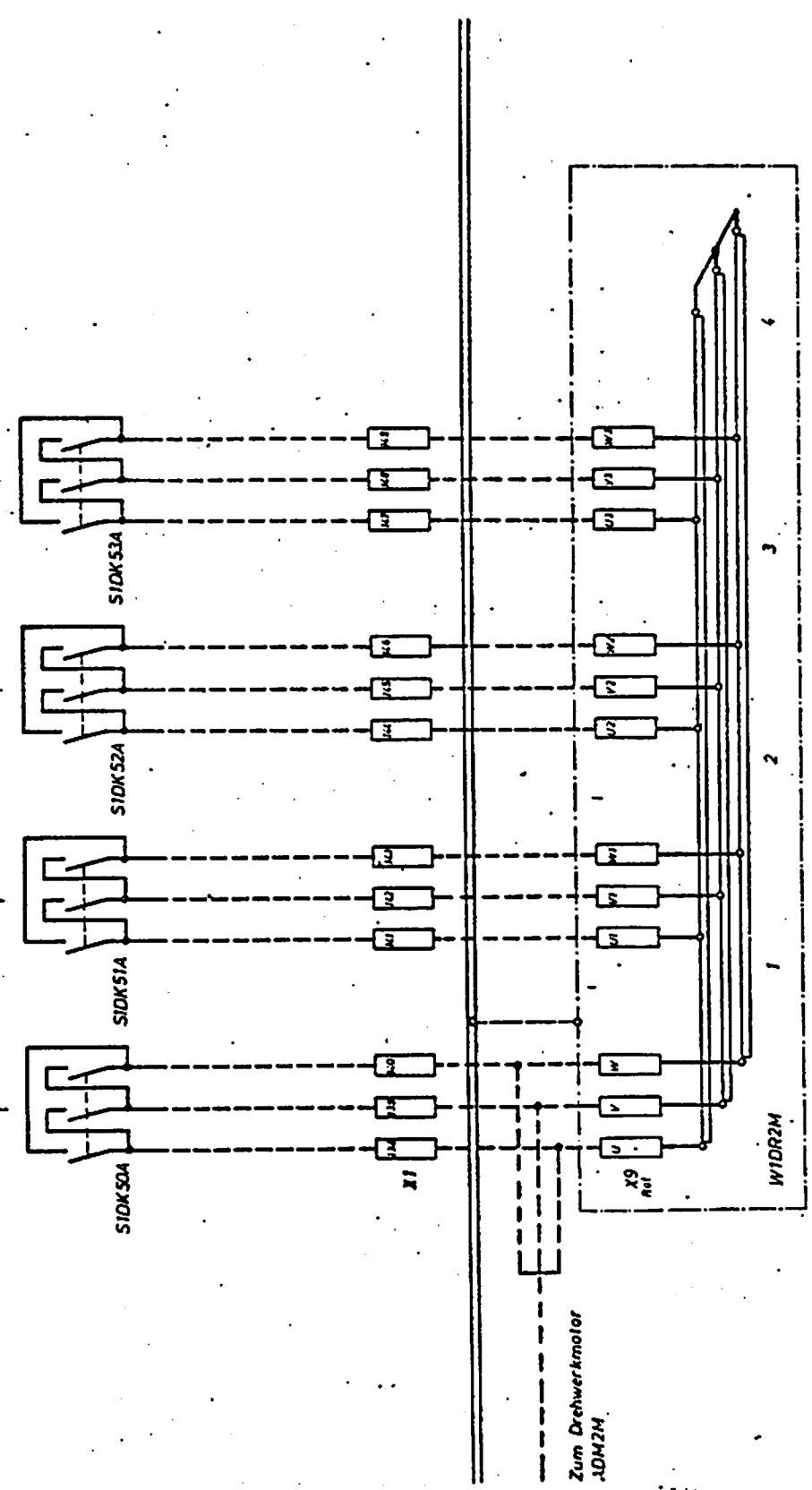


* Nicht serienmäßig



61	62	63	64	65	66	67	68
							U
							L2
							L3
							L4
							L5
							L6
							Z5
							Z6

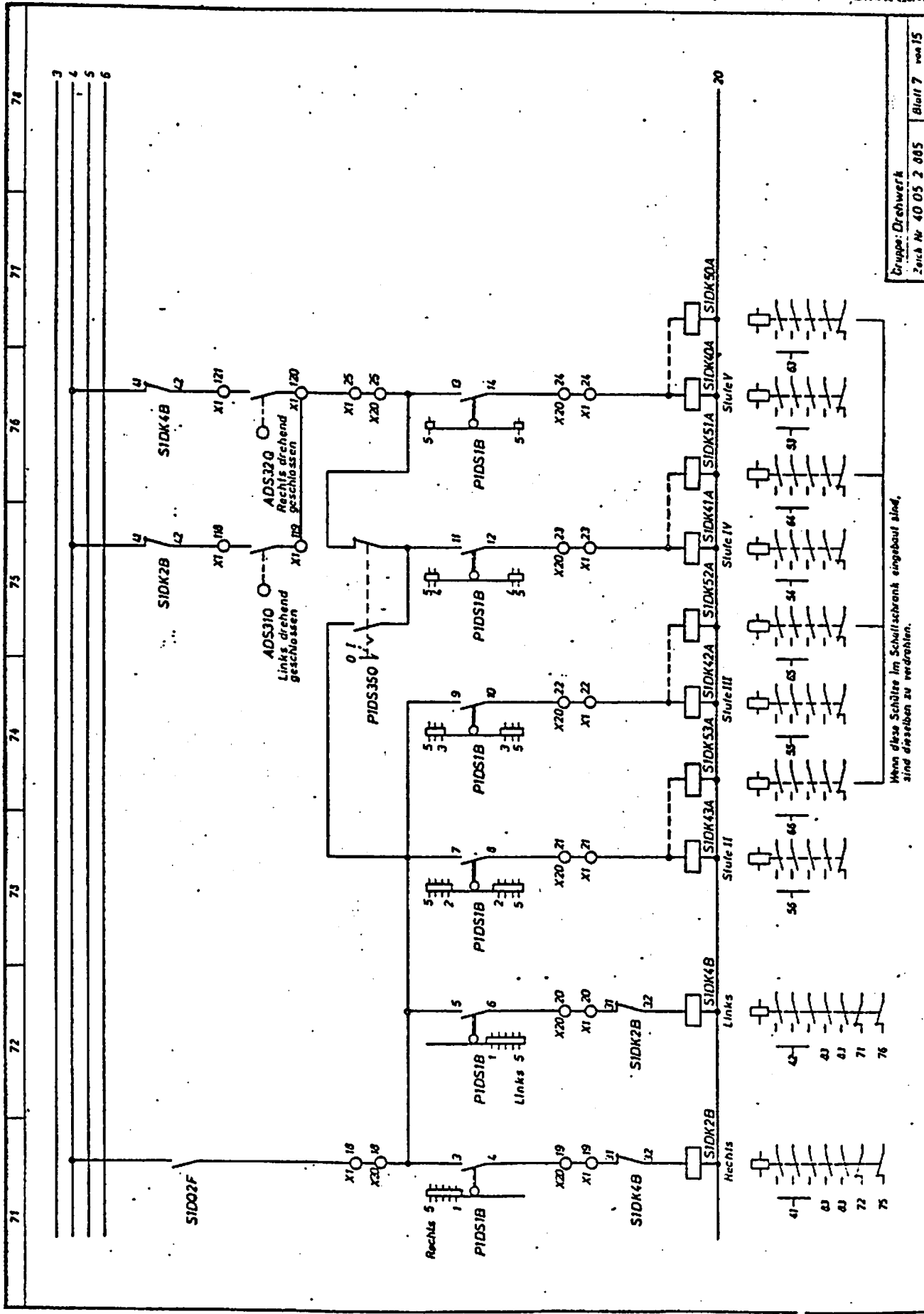
Wenn diese Schütze im Schaltschrank eingebaut sind,
sind dieselben zu verdrahten

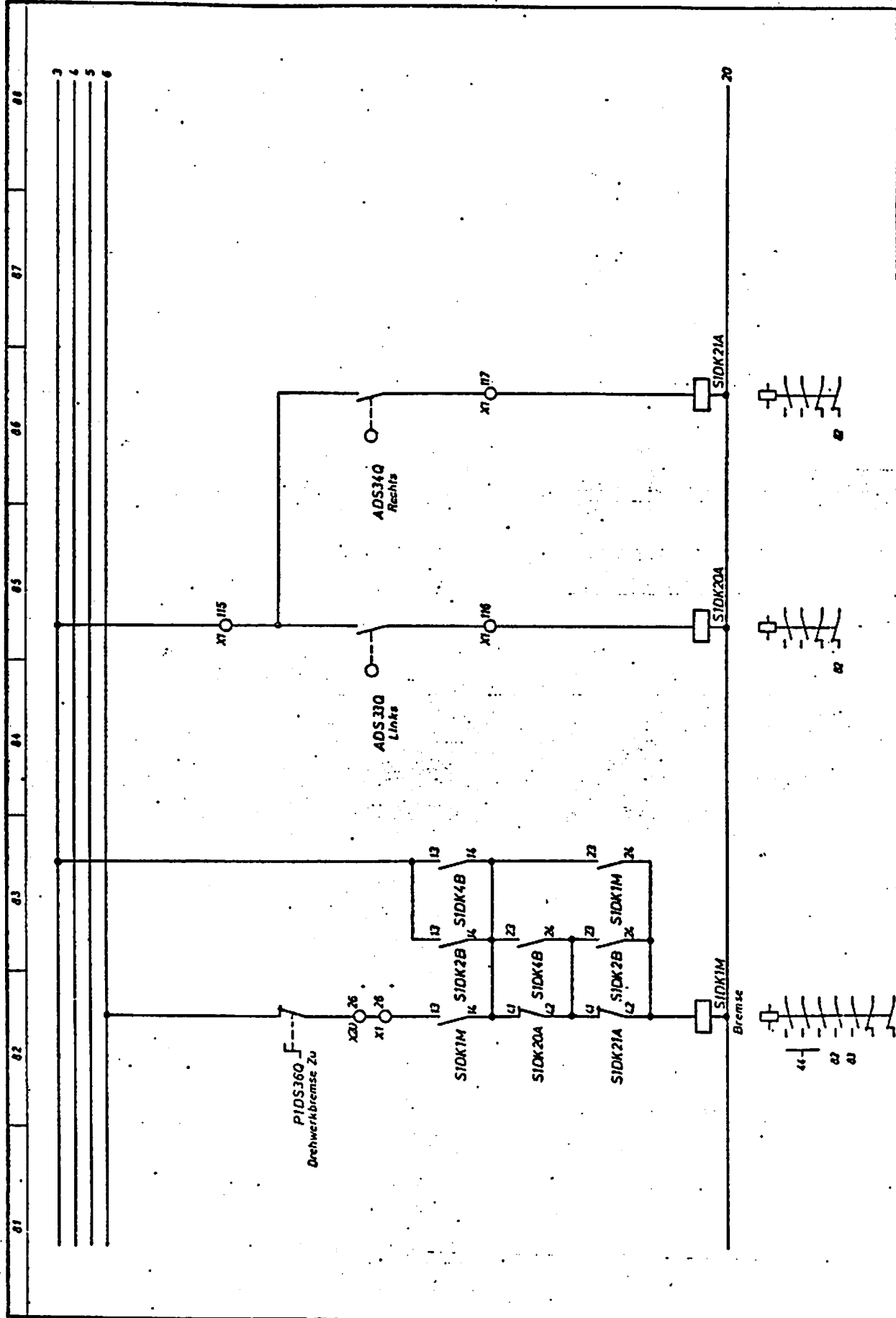


Zum Drehwerkmotor
ADM2M

WDR2M

Widerstandschrank





81 82 83 84 85 86 87 88

3
4
5
6

PID360 F
Drehwerkbremse Zu

X20, 26
X1, 26

ADS330
Links

ADS340
Rechts

X1, 115

SIDK1M
SIDK2B
SIDK1B
SIDK2A
SIDK1A
SIDK2A

X1, 117

X1, 116

SIDK21A

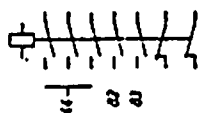
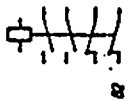
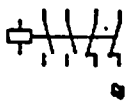
SIDK20A

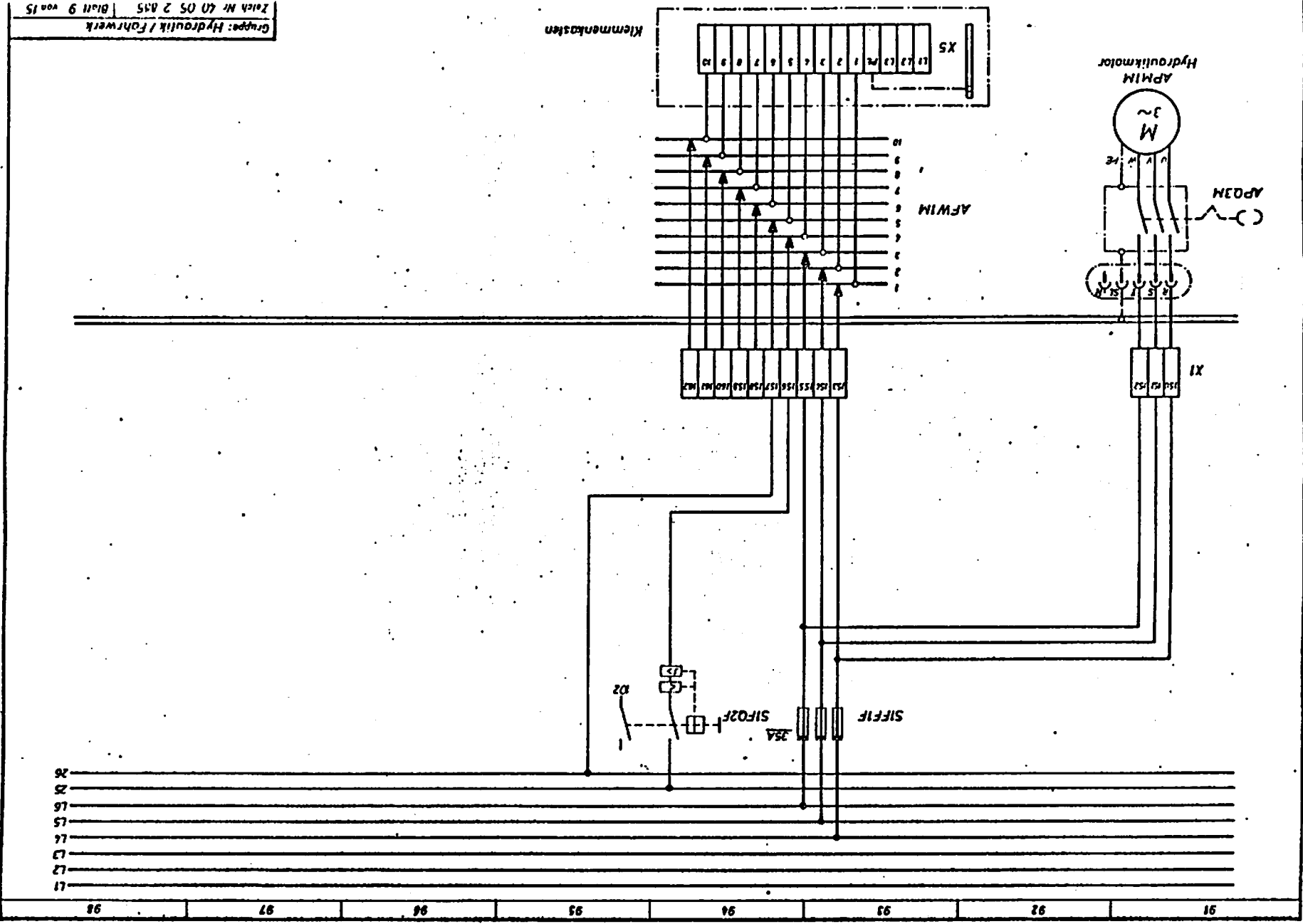
SIDK1M

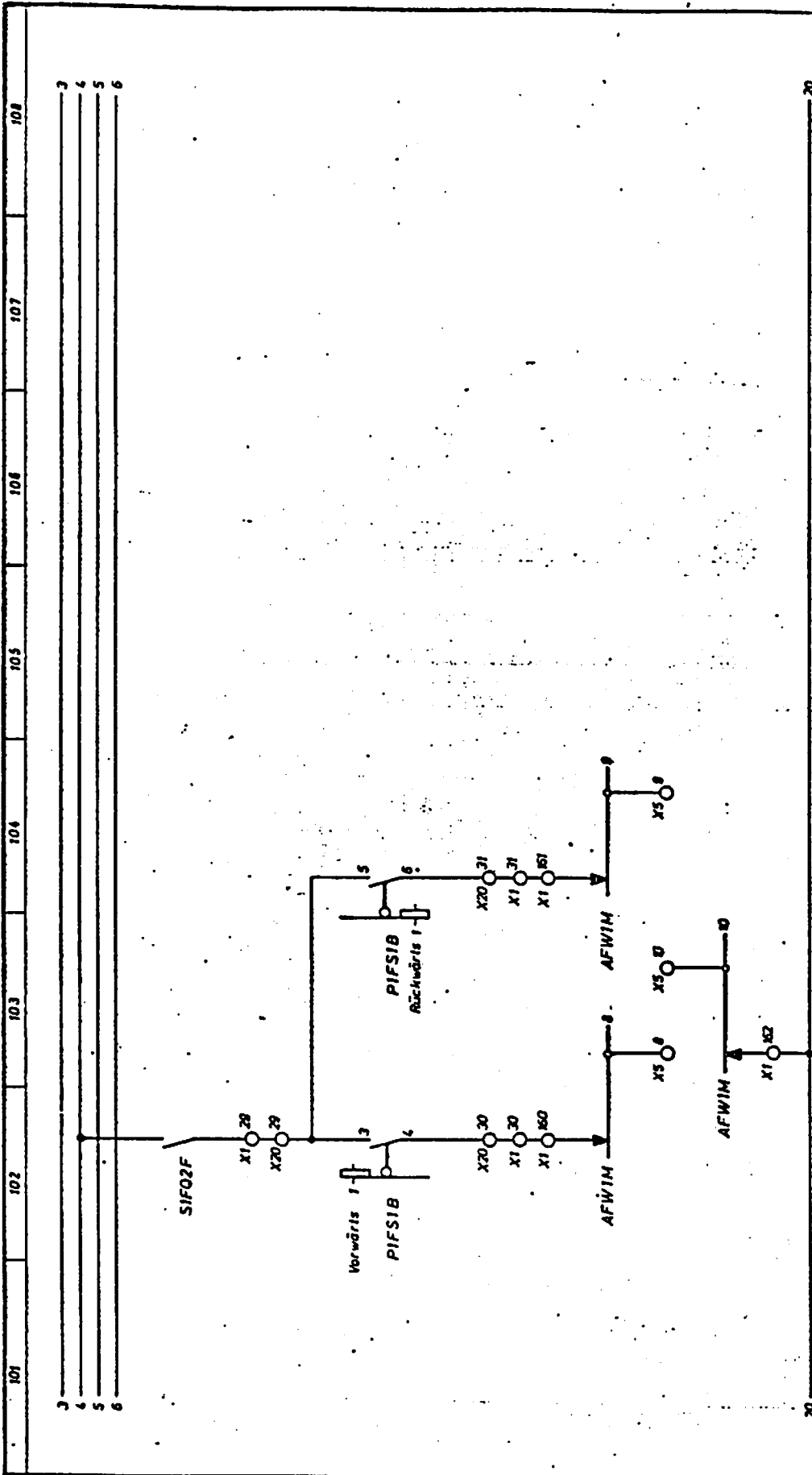
Bremse

20

44
42
41

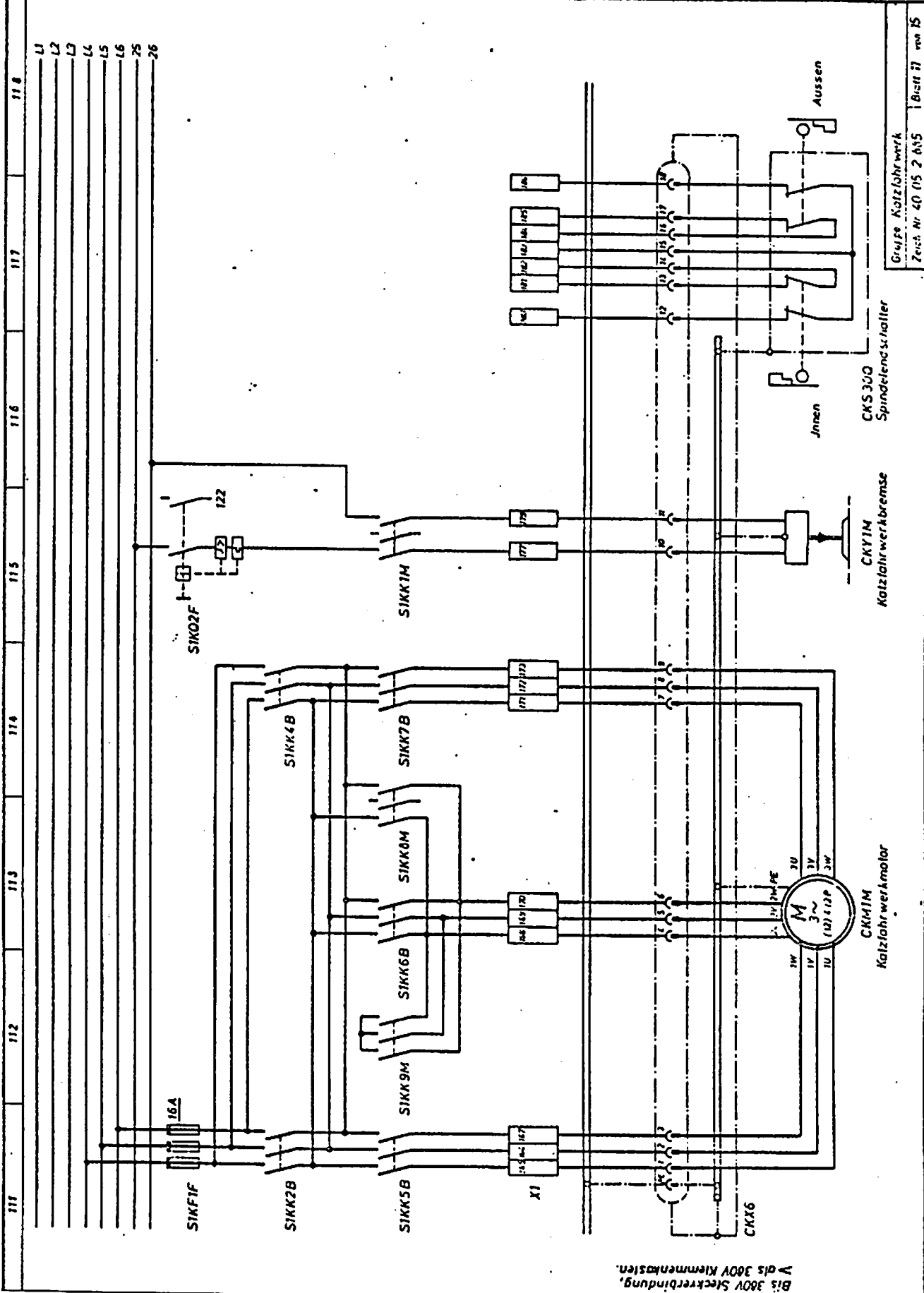






101 102 103 104 105 106 107 108

3
4
5
6



121 122 123 124 125 126 127 128

3
4
5
6

