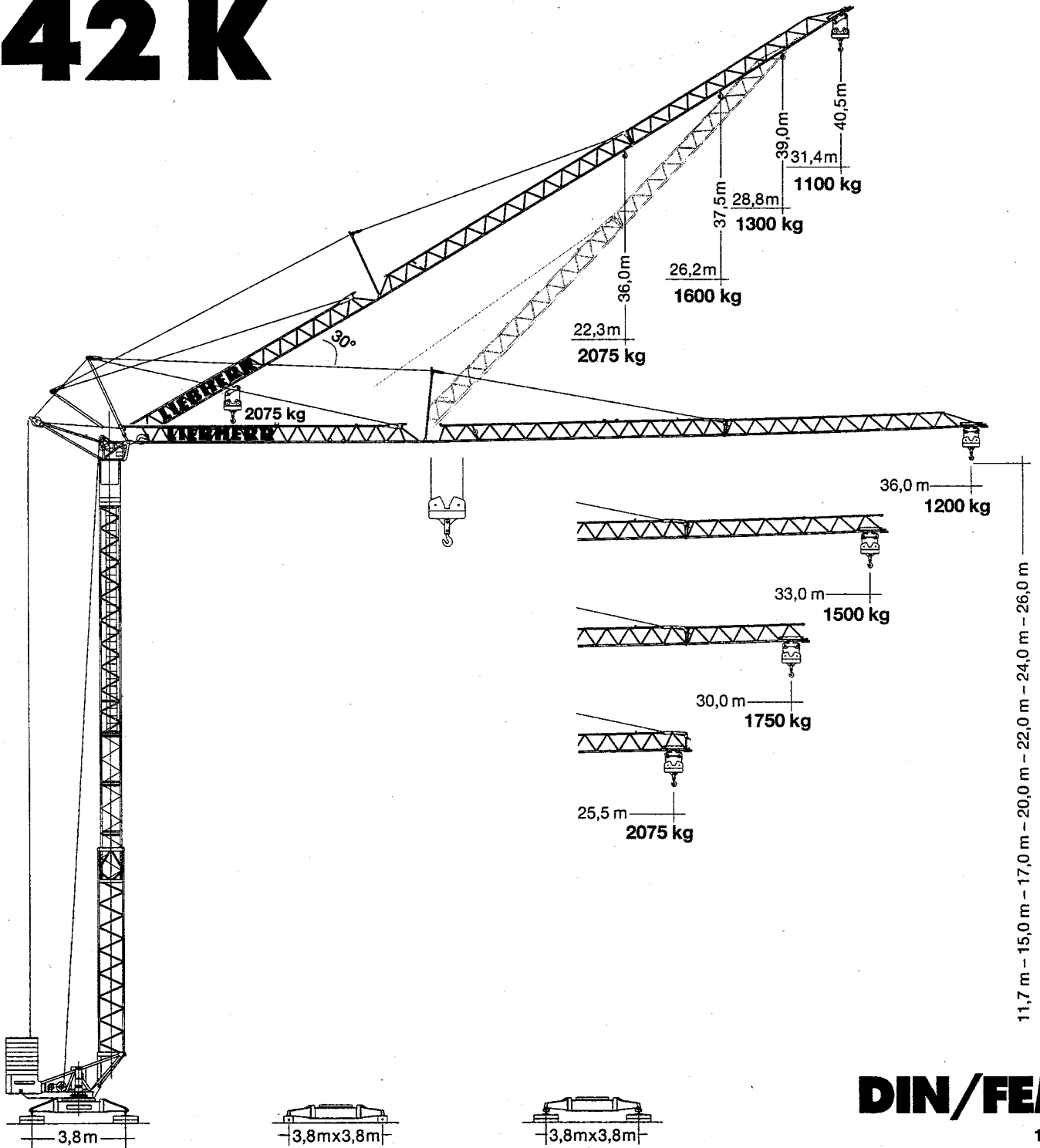


**Tower Crane / Grue à tour / Gru a torre  
Grúa torre / Guindaste de torre**

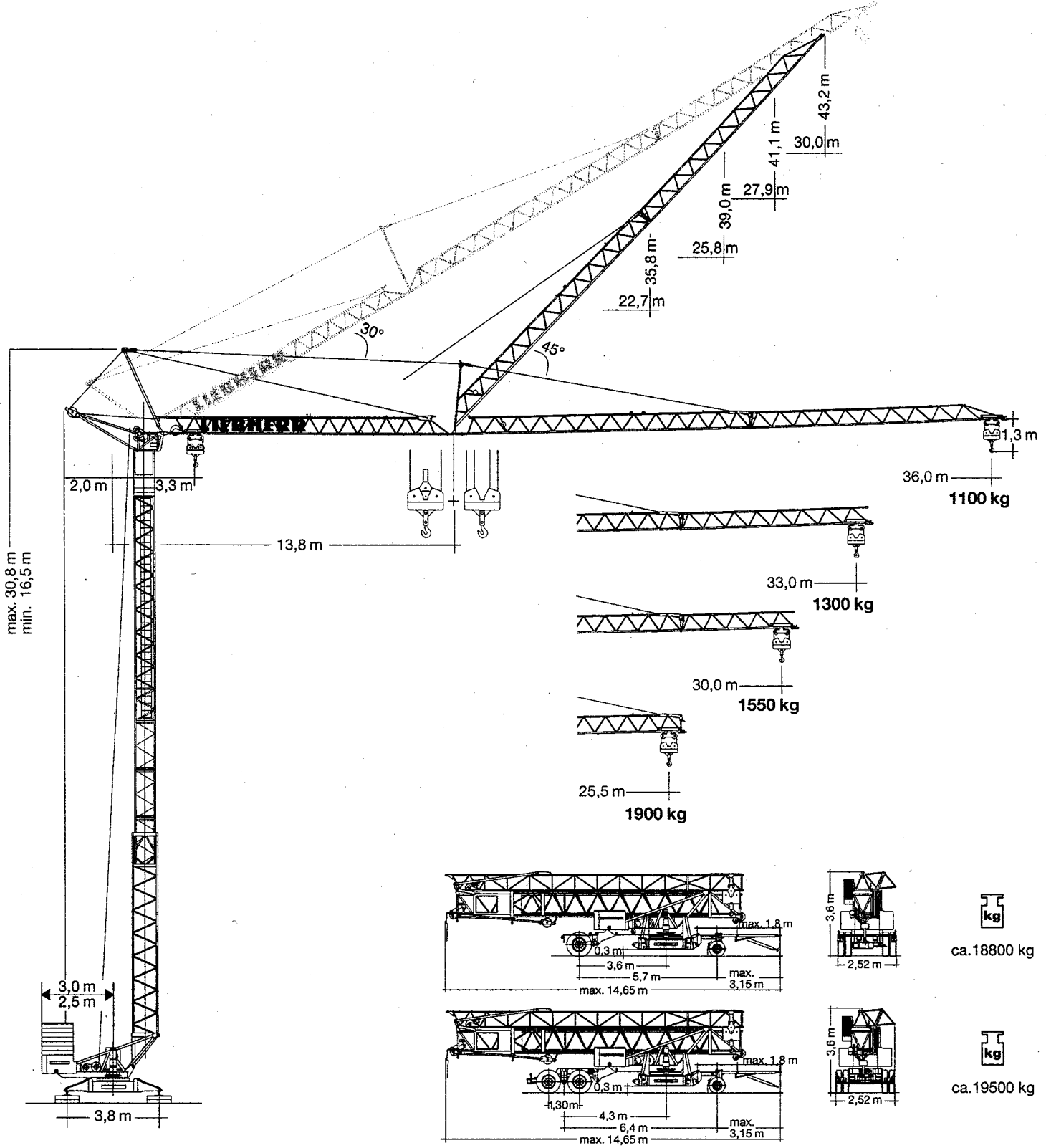
# Turmdrehkran 42 K



**DIN/FEM**

1:236

# LIEBHERR



# Gewicht

Weight / Poids / Peso / Peso / Pesos

<b>Zentralballast / Central ballast</b> Lest de base / Zavorra centrale Lastro central / Lastre central	1400 kg		$r = 3,0 \text{ m}$ 22440 kg $r = 2,5 \text{ m}$ 26360 kg		10960 kg (HH 26 m: + 900 kg)
---	---------	--	--	--	---------------------------------

# 42 K

# Ausladung und Tragfähigkeit

Radius and capacity / Portée et charge / Sbraccio e portata / Alcances y cargas / Alcance e capacidade de carga

		m/kg																	
m	m/kg	20,0	21,0	22,0	23,0	24,9	25,5	26,0	26,5	27,5	28,0	29,5	30,0	31,0	32,9	33,0	34,0	35,0	36,0
36,0	3,3 - 20,90 2075	2075	2065	1950	1850	1680	1635	1600	1560	1500	1460	1370	1340	1290	1200	1200	1200	1200	1200
33,0	3,3 - 20,95 2075	2075	2070	1960	1860	1690	1640	1600	1570	1500	1500	1500	1500	1500	1500	1500			
30,0	3,3 - 21,60 2075	2075	2075	2030	1925	1750	1750	1750	1750	1750	1750	1750	1750	1750					
25,5	3,3 - 22,63 2075	2075	2075	2075	2075	2075	2075												

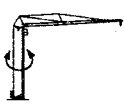
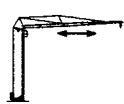
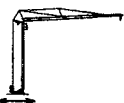

		m/kg																					
m	m/kg	11,0	12,0	13,0	14,0	16,0	18,0	20,0	23,6	24,0	25,5	26,0	26,5	27,0	28,0	29,5	30,0	31,0	32,0	33,0	33,5	35,0	36,0
36,0	3,3 - 20,90 2000	2000	2000	2000	2000	2000	2000	2000	1720	1680	1560	1520	1490	1450	1390	1300	1270	1220	1170	1120	1100	1100	1100
33,0	3,3 - 20,95 2000	2000	2000	2000	2000	2000	2000	2000	1725	1690	1565	1530	1490	1460	1390	1300	1300	1300	1300	1300			
30,0	3,3 - 21,60 2000	2000	2000	2000	2000	2000	2000	2000	1790	1755	1630	1590	1550	1550	1550	1550	1550						
25,5	3,3 - 22,63 2000	2000	2000	2000	2000	2000	2000	2000	1900	1900	1900												

		m/kg																					
m	m/kg	11,0	12,0	13,0	14,0	16,0	18,0	20,0	23,6	24,0	25,5	26,0	26,5	27,0	28,0	29,5	30,0	31,0	32,0	33,0	33,5	35,0	36,0
36,0	3,3 - 11,99 4000	4000	4000	3610	3290	2790	2410	2200	1880	1840	1705	1665	1625	1590	1520	1420	1390	1330	1280	1230	1210	1140	1100
33,0	3,3 - 12,02 4000	4000	4000	3620	3300	2800	2600	2420	1980	1940	1800	1750	1710	1670	1600	1500	1470	1410	1350	1300			
30,0	3,3 - 12,36 4000	4000	4000	3755	3420	3100	2900	2550	2080	2040	1895	1850	1810	1770	1690	1580	1550						
25,5	3,3 - 12,90 4000	4000	4000	3960	3800	3360	2910	2560	2090	2050	1900												



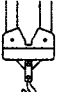
		Auslegerstellung 30° / Elevated jib 30° / Flèche inclinée 30° Braccio inclinato a 30° / Pluma inclinada 30° / Lança inclinada 30°															
m	m/kg	17,0	18,0	19,0	20,0	21,0	22,3	23,0	24,0	25,0	26,2	27,0	28,0	28,8	30,0	31,0	31,4
36,0	3,0 - 16,7 2075	2030	1890	1760	1650	1550	1430	1370	1300	1230	1150	1110	1100	1100	1100	1100	1100
33,0	3,0 - 17,7 2075	2075	2030	1890	1770	1670	1540	1480	1400	1330	1300	1300	1300	1300			
30,0	3,0 - 18,2 2075	2075	2075	1970	1840	1730	1600	1600	1600	1600	1600						
25,5	3,0 - 19,1 2075	2075	2075	2075	2075	2075	2075										

## Geschwindigkeiten

Speeds / Vitesses / Velocità / Velocidades / Velocidades

	U/min. 0 ↔ 0,9 st./min tr./min	3,0 kW, EDC
	20,0 / 40,0 m/min	1,3 / 2,3 kW
	25,0 m/min	2 x 1,3 kW
	0 - 45°, 30 sec.	3,0 kW

	Stufe / Step / Cran Marcia / Velocidad Velocidade	kg	m/min
11,0 kW	1	2075	6,0
	2	2075	25,0
	3	1000	50,0
11,0 kW	1	2000 4000	6,0 3,0
	2	2000 4000	25,0 12,5
	3	1000 2000	50,0 25,0
11,0 kW (FU)	1	2000 4000	3,0 1,5
	2	2000 4000	30,0 15,0
	3	1500 3000	40,0 20,0
	4	1000 2000	55,0 27,5

BGL:  2108-0050  +  2108-0045

400 V	Hz	kVA
63,0 m 4 x 10 mm <sup>2</sup> (KL) 4 x 6 mm <sup>2</sup> (FU)	50	22,0 (KL) 17,0 (FU)

## Technische Daten

Technical data - Caractéristiques techniques

Caratteristiche tecniche - Características técnicas - Datos técnicos

# Aufstellvorgang

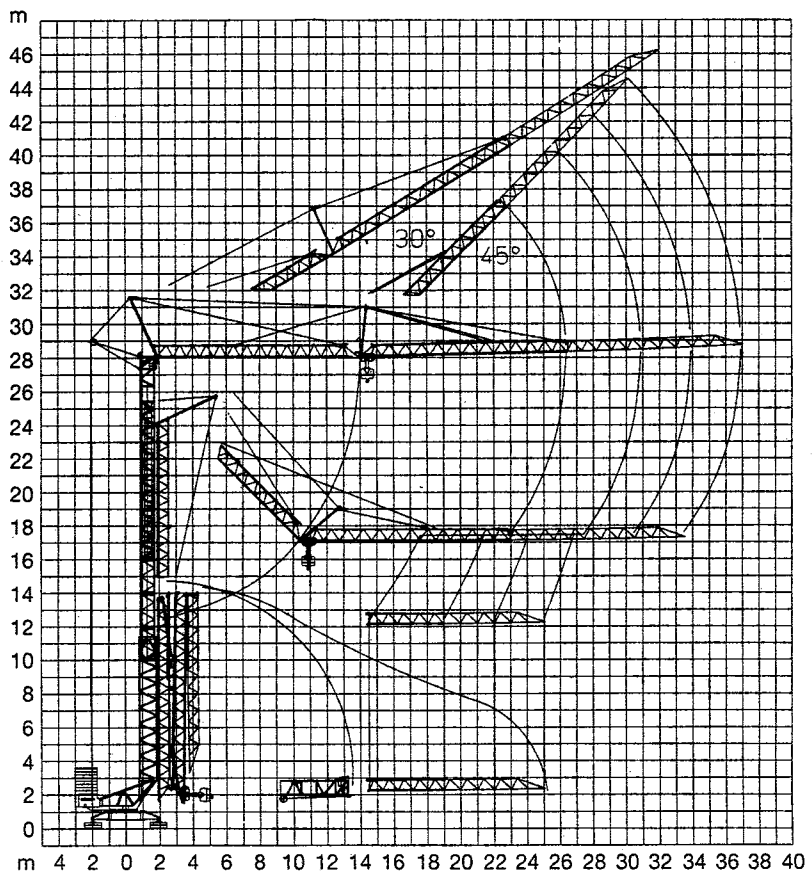
Erection procedure

Déroulement de montage

Procedimento di montaggio

Procedimiento de montaje


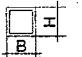
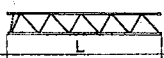
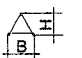

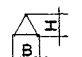






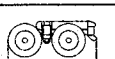
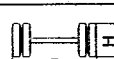
Sistema de montagem



## Kolli-Liste

Packing List / Liste de colisage / Lista dei colli

Lista de contenido / Lista de embalagem

Pos. Item	Anz. Qty.		L (m)	B (m)	H (m)	kg		
1	3	<b>Turmstück / Tower section</b> Elément de mât / Elemento di torre Tramo de torre / Peça de torre			2,10	0,85	0,88	350
2	1	<b>Ausleger-Verlängerung 25,5 m – 30,0 m</b> Jib extension / Rallonge de la flèche Elemento estensione braccio Prolongación de pluma / Extensão da lança			4,70	0,80	0,70	180
3	1	<b>Ausleger-Verlängerung 30,0 m – 33,0 m</b> Jib extension / Rallonge de la flèche Elemento estensione braccio Prolongación de pluma / Extensão da lança			3,10	0,80	0,70	110
4	1	<b>Ausleger-Verlängerung 33,0 m – 36,0 m</b> Jib extension / Rallonge de la flèche Elemento estensione braccio Prolongación de pluma / Extensão da lança			3,10	0,80	0,70	95
5	1	<b>Transportachse vorne Tra 100 KY 2</b> Road transport axle front / Essieux de transport avant / Asse di trasporto anteriore / Eje delantero para transporte / Eixo de transporte dianteiro			3,00	1,13	0,97	660
6	1	<b>Transportachse hinten Tra 120 GY 1A</b> Road transport axle behind / Essieux de transport arrière / Asse di trasporto posteriore / Eje trasero para transporte / Eixo de transporte traseiro			1,90	2,50	1,05	1150
7	1	<b>Transportachse Tra 200 GZ 3 / Road transport axle</b> Essieux de transport / Assali par trasporto Tra 200 GZ 3 / Eje de transporte Eixo de transporte			3,10	2,50	1,10	2600
8	1	<b>Kiste mit Seilen und Kleinteilen / Case with ropes and small parts</b> Caisse avec câbles et pièces détachées / Cassa con funi e accessori Caja con cables y piezas sueltas / Caixa contendo cabos e acessórios			1,00	0,80	1,00	450

120 P – 3739 H1 B3 DIN 15018 • BGL 2108-0050 / FEM (Section 1) Krangruppe A3 und OENORM T3 • 03.01 / 6

Konstruktionsänderungen vorbehalten! / Subject to alterations!  
Sous réserves de modifications! / Si fa riserva di modifichel  
Salvo modificação da construação! / Sujeto a modificaciones!

Printed in Germany.